

MIDJ



Nenè square Table

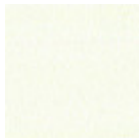
design Paolo Vernier, 2013

Nenè square table with four leg base in lacquered metal. Stackable up to 4 pieces.

Melamine or HPL top.

Colors and Materials

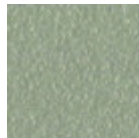
Structure



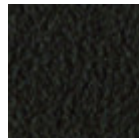
White steel



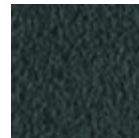
Black steel



Sand steel

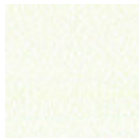


Brown steel



Grafite metal

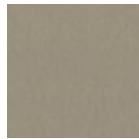
Coating



White Melamine



Black melamine



Sand melamine



Graphite melamine



White hpl black core



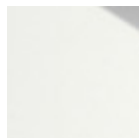
Black hpl



Hpl cemento



Hpl corten



White hpl white core

Dimensions



	A (cm) (inch)	B (cm) (inch)	C (cm) (inch)
75x75 (cm) (inch)	75 29.5	75 29.5	75 29.5
85x85 (cm) (inch)	75 29.5	85 33.5	85 33.5

Volumetric Details

Weight 22.5 Kg
Volume 0.29 mc
Package 3

Downloads

3D Nenè 75x75 (zip) - <https://www.midj.com/images/uploads/resources/nene-75x75-3d.zip>

3D 85x85 (zip) - <https://www.midj.com/images/uploads/resources/nene-85x85-3d.zip>