

# MIDJ



## Nenè round Table

design Paolo Vernier, 2013

Nenè round table with laquered metal base.

Top in melamine or HPL.

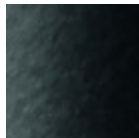
Available in two sizes: Ø70 cm and Ø80 cm.

### Colors and Materials

#### Structure



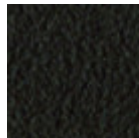
White steel



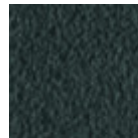
Black steel



Sand steel

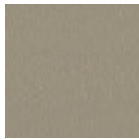


Brown steel



Grafite metal

#### Coating

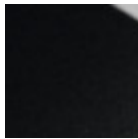


Melamine

8 Colors



White hpl black core



Black hpl



Hpl cemento



Hpl corten



White hpl white core

### Dimensions



	A (cm)	B (cm)	C (cm)
	(inch)	(inch)	(inch)
<b>Ø70 (cm)</b>	75	70	70
(inch)	29.5	27.6	27.6
<b>Ø80 (cm)</b>	75	80	80
(inch)	29.5	31.5	31.5

### Volumetric Details

Weight 19.5 Kg

Volume 0.25 mc

Package 3