

MIDJ



Nenè rectangular Table

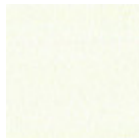
design Paolo Vernier, 2013

Nenè rectangular table with four leg base in lacquered metal.

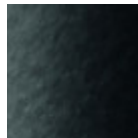
Melamine, hpl, fenix or laminate top.

Colors and Materials

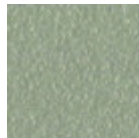
Structure



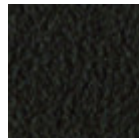
White steel



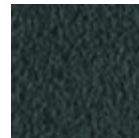
Black steel



Sand steel

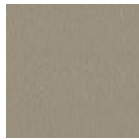


Brown steel



Grafite metal

Coating



Melamine

8 Colors

Dimensions



	cm	inch
A	75	29.5
B	140	55.1
C	90	35.4

Volumetric Details

Weight 32 Kg
Volume 0.29 mc
Package 3

Downloads

3D Nenè 140x90 (zip) - <https://www.midj.com/images/uploads/resources/nene-140x90-3d.zip>