

# A. Cruise Melange

Noctis®

Composizione/  
Composition **58% recycled PL  
42 % PL**

Altezza/ Width **140 cm**

Peso/  
Weigt **(± 4%)  
580 g/m2**

Resistenza alla luce/  
Colour fastness to light

Martindale **40.000**

Resistenza del colore al lavaggio/  
Colour fastness to washing **3/4**

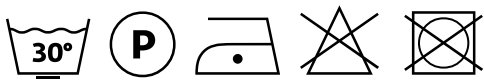
Ignifugo/  
Fireproof **no**

Idrorepellente/  
Waterproof **no**

Antimacchia/  
Stain resistant **no**



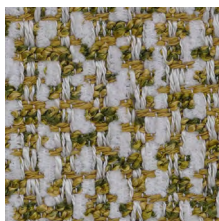
**Cruise Melange 001**  
Pant. 12-0304



**Cruise Melange 007**  
Pant. 13-1405



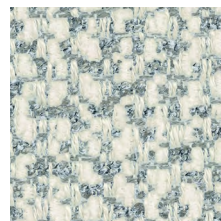
**Cruise Melange 005**  
Pant. 13-4409



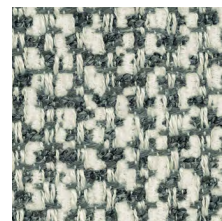
**Cruise Melange 003**  
Pant.15-0543



**Cruise Melange 004**  
Pant. 18-5410



**Cruise Melange 009**  
Pant. 13-4303



**Cruise Melange 010**  
Pant. 19-4220



**Cruise Melange 011**  
Pant. 19-4015

# A. Nuvole

Noctis®

Composizione/  
Composition **95 %PL - 05%CO**

Altezza/  
Width **140 cm**

Peso/  
Weight **(± 4%)  
785 g/m<sup>2</sup>**

Resistenza alla luce/  
Colour fastness to light **4**

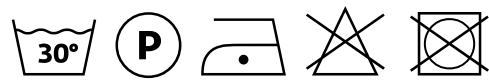
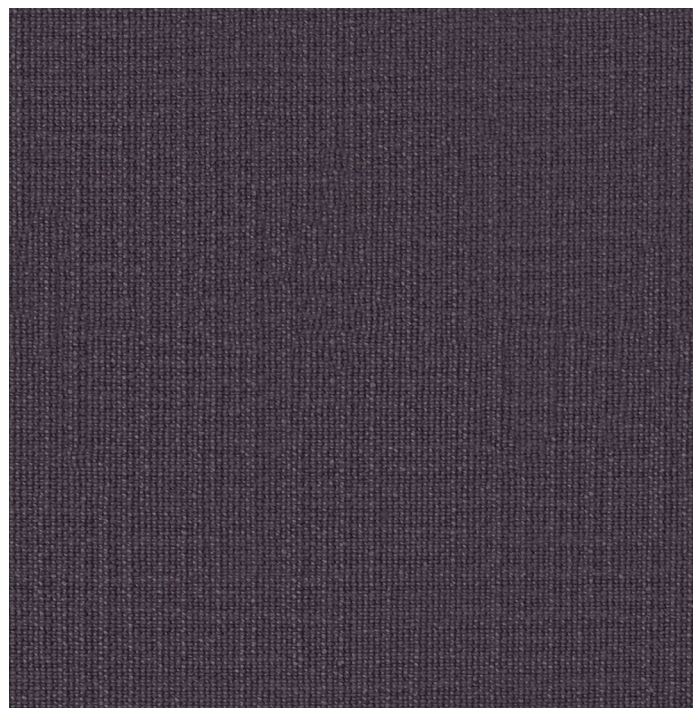
Martindale **55.000**

Resistenza del colore al lavaggio/  
Colour fastness to washing **4**

Ignifugo/  
Fireproof **no**

Idrorepellente/  
Waterproof **si**

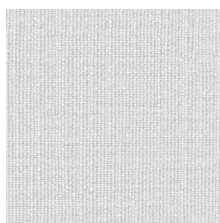
Antimacchia/  
Stain resistant **si**



**Nuvole 003**  
Pant. 19-3217



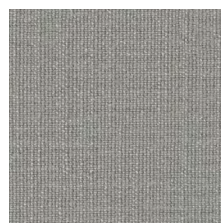
**Nuvole 100**  
Pant. 13-0907



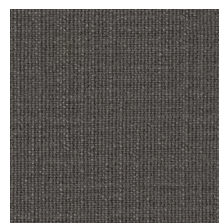
**Nuvole 111**  
Pant. 11-0601



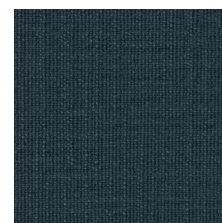
**Nuvole 501**  
Pant.16-0954



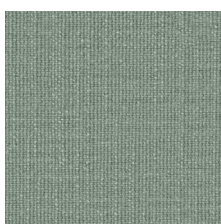
**Nuvole 601**  
Pant. 14-4103



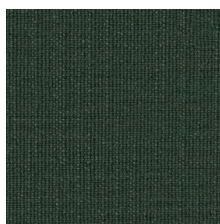
**Nuvole 604**  
Pant. 17-1212



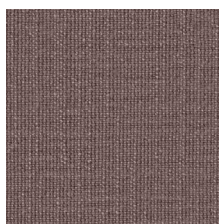
**Nuvole 704**  
Pant. 19-4517



**Nuvole 800**  
Pant. 16-5304



**Nuvole 804**  
Pant. 19-0315



**Nuvole 901**  
Pant. 17-1424

# A. Pelle Taurus

Noctis®



Taurus 25



Taurus 61



Taurus 27



Taurus 50



Taurus 76



Taurus 32



Taurus 20



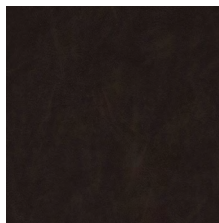
Taurus 81



Taurus 30



Taurus 62



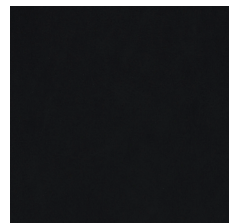
Taurus 84



Taurus 64



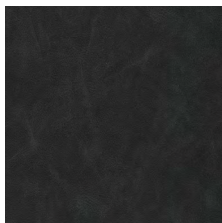
Taurus 01



Taurus 22



Taurus 74



Taurus 104

# A. Pelle Taurus

Noctis®

Composizione/  
Composition **55% Pelle Leather**  
**33% PL -12PU**

Altezza/  
Width **138 cm**

Peso/  
Weight **960± 10% g/m2**

Spessore/  
Thickness **1,5 ± 10%mm**

Pulire delicatamente con un panno  
morbido e umido.  
Non usare abrasivi solventi e detergenti chimici.  
Gently wipe with a soft and damp cloth.  
Do not use abrasive solvent and chemical  
detergents.



## Caratteristiche tecniche/ Technical datasheet

Test	Metodo/ Method	Valori/ Result
Solidità colore fregamento/ Color fastness	<b>ISO 105-X12</b>	<b>≥4-5 grado</b> Secco e umido/ Dry and wet
Carico di rottura/ Tensile strength	<b>ISO 1421:2000</b>	<b>596,63 N/3cm</b> (Trama/ Weft) <b>570,8 N/3cm</b> (Ordito/ Warp)
Solidità colore alla luce/ Solidity in light	<b>ISO 105-B02:2004</b>	<b>5 chiari 6 medi 7 scuri</b> <b>5 light 6 medium 7 dark</b>
Resistenza all'abrasione/ Abrasion resistance	<b>ISO 12947-2</b> (Martindale)	<b>&gt;100.000</b> Giri/Cicles
Resistenza alle flessioni/ Resistance to flexure	<b>ISO 7854:1999</b>	<b>&gt;30.000 n°Flex</b>
Resistenza al fuoco/ Flame resistance	<b>BS 5852-CAL TB 117:2013</b>	<b>Pass</b>

# A. Manhattan

Noctis®

Composizione/  
Composition **26% PL - 37% PC**  
**21% CO - 16% LI**

Altezza/  
Width **140 cm**

Peso/  
Weight **(± 5%)**  
**635 g/m<sup>2</sup>**

Resistenza alla luce/  
Colour fastness to light **Scuri/ Dark**  
**4**

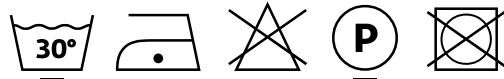
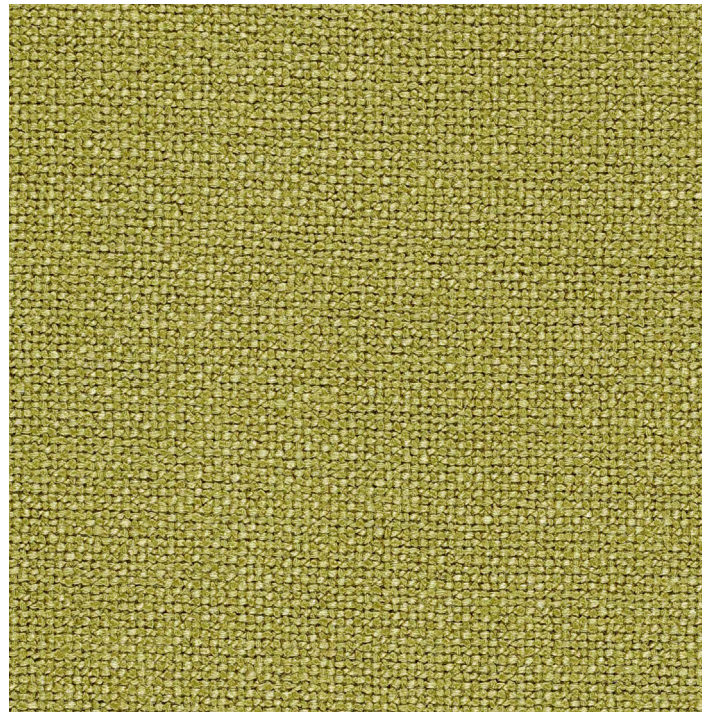
Martindale **25.000**

Resistenza del colore al lavaggio/  
Colour fastness to washing **3/4**

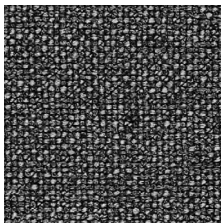
Ignifugo  
Fireproof **no**

Idrorepellente  
Waterproof **no**

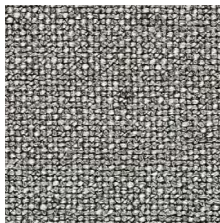
Antimacchia  
Stain resistant **no**



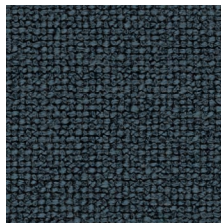
**Manhattan 804**  
Pant. 15 -0743



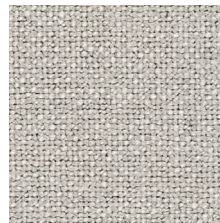
**Manhattan 601**  
Pant. 18 -0000



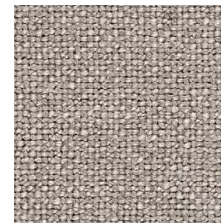
**Manhattan 603**  
Pant. 19-0809



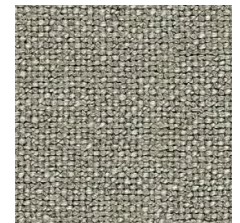
**Manhattan 705**  
Pant. 19 -3921



**Manhattan 400**  
Pant. 12 -1403



**Manhattan 402**  
Pant. 16 -1210



**Manhattan 600**  
Pant. 16 -1107

# A. Nord Wool

Noctis®

Composizione/  
Composition **70% WO - 30% PL**

Altezza/  
Width **150 cm**

Peso/  
Weight **(± 5%)  
345 g/m<sup>2</sup>**

Resistenza alla luce/  
Colour fastness to light **Scuri/ Dark  
5**

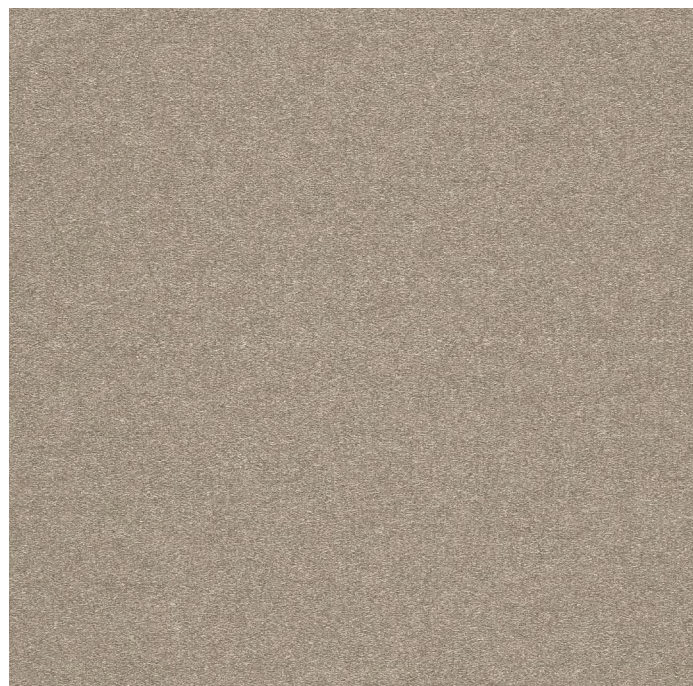
Martindale **100.000**

Resistenza del colore al lavaggio/  
Colour fastness to washing **4/5**

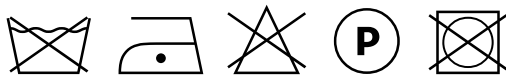
Ignifugo/ Fireproof **no**

Idrorepellente  
Waterproof **no**

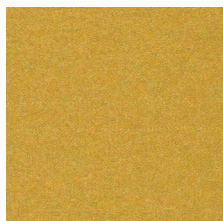
Antimacchia  
Stain resistant **no**



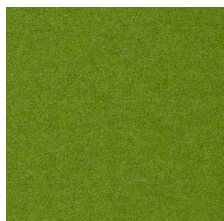
**Nord Wool 404**  
Pant. 15-1308



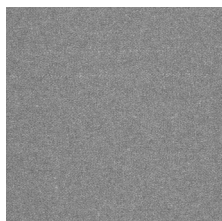
**N.B.** Solo lavaggio a secco/ Dry clean only



**Nord Wool 502**  
Pant. 14-1041



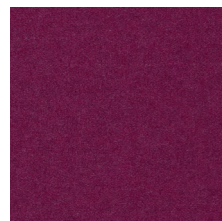
**Nord Wool 802**  
Pant. 17-0336



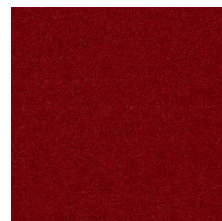
**Nord Wool 600**  
Pant. 17-4402



**Nord Wool 001**  
Pant. 18-2929



**Nord Wool 003**  
Pant.18-2326



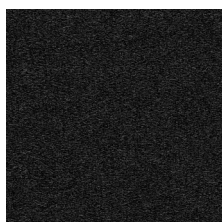
**Nord Wool 302**  
Pant. 19-1663



**Nord Wool 701**  
Pant. 19-4118



**Nord Wool 402**  
Pant. 11-0604

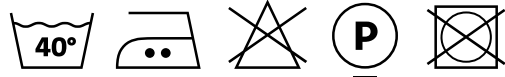
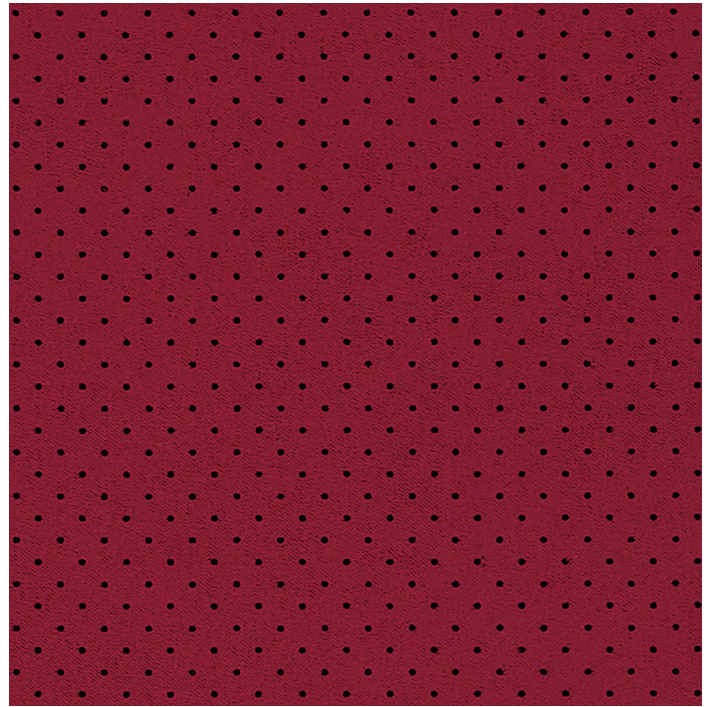


**Nord Wool 200**  
Pant. 19-4203

# A. Air

Noctis®

Composizione/ Composition	<b>100 %PL</b>
Altezza/ Width	<b>140 cm</b>
Peso/ Weigt	(± 5%) <b>530 g/m2</b>
Resistenza alla luce/ Colour fastness to light	Scuri/ Dark <b>4</b>
Martindale	<b>40.000</b>
Resistenza del colore al lavaggio/ Colour fastness to washing	<b>3/4</b>
Ignifugo/ Fireproof	<b>no</b>
Idrorepellente/ Waterproof	<b>no</b>
Antimacchia/ Stain resistant	<b>si</b>



Air 319



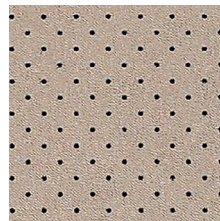
Air 103



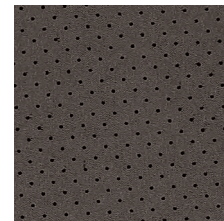
Air 100



Air 806



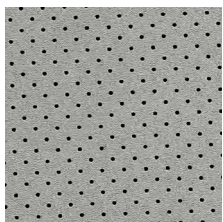
Air 412



Air 603



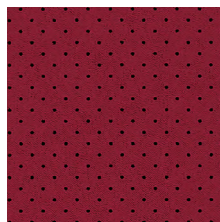
Air 609



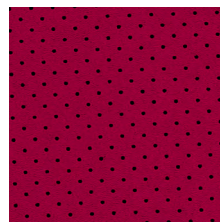
Air 610



Air 611



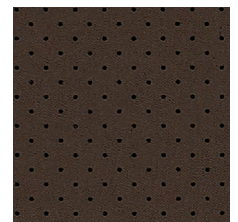
Air 319



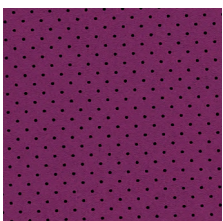
Air 305



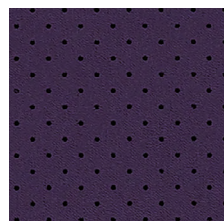
Air 405



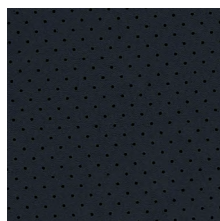
Air 415



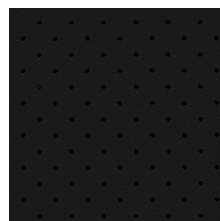
Air 008



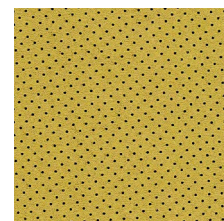
Air 009



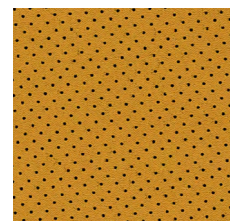
Air 626



Air 200

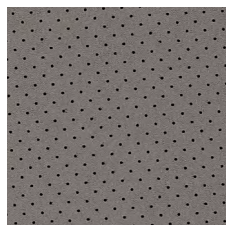


Air 504

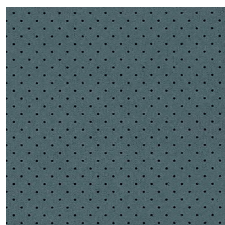


Air 503

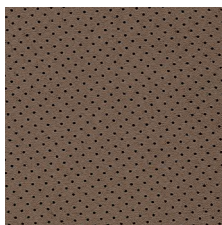
# A. Air



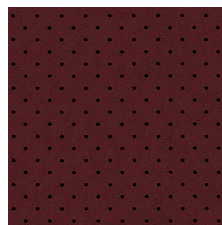
Air 604



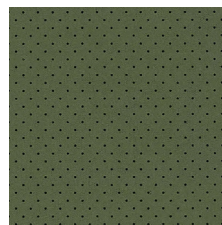
Air 717



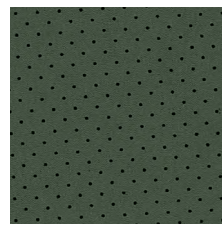
Air 413



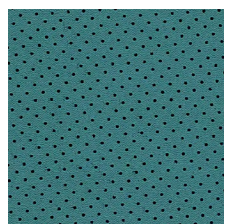
Air 320



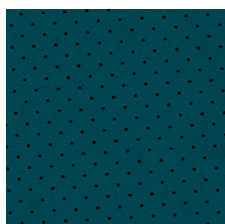
Air 808



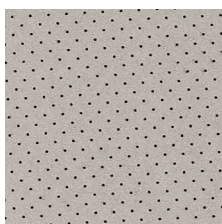
Air 801



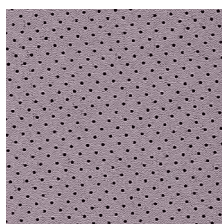
Air 715



Air 809



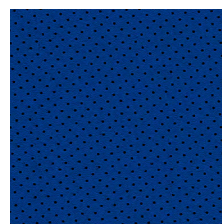
Air 006



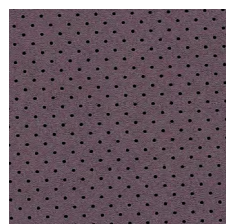
Air 001



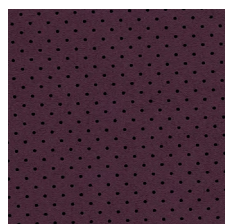
Air 700



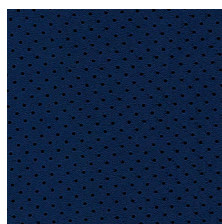
Air 701



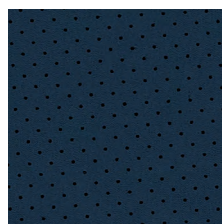
Air 007



Air 010



Air 704



Air 705



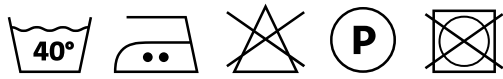
# A. Sauvage

Noctis®

Composizione/ Composition	<b>100 %PL</b>
Altezza/ Width	<b>140 cm</b>
Peso/ Weight	(± 5%) <b>530 g/m<sup>2</sup></b>
Resistenza alla luce/ Colour fastness to light	Scuri/ Dark <b>4</b>
Martindale	<b>40.000</b>
Resistenza del colore al lavaggio/ Colour fastness to washing	<b>3/4</b>
Ignifugo/ Fireproof	<b>no</b>
Idrorepellente/ Waterproof	<b>no</b>
Antimacchia/ Stain resistant	<b>si</b>



Sauvage 100



Sauvage 415



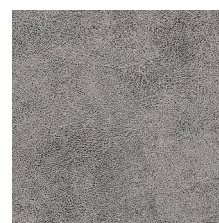
Sauvage 603



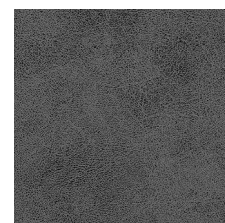
Sauvage 604



Sauvage 609

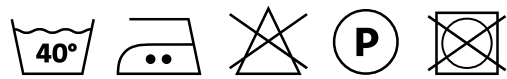
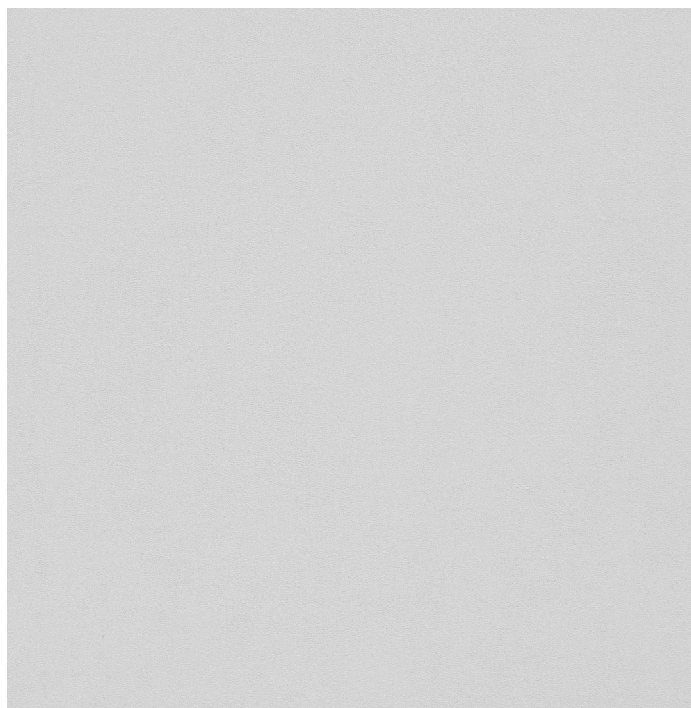


Sauvage 610

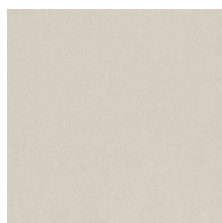


Sauvage 611

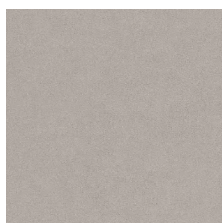
Composizione/ Composition	<b>100 %PL</b>
Altezza/ Width	<b>140 cm</b>
Peso/ Weight	(± 5%) <b>530 g/m2</b>
Resistenza alla luce/ Colour fastness to light	Scuri/ Dark <b>4</b>
Martindale	<b>40.000</b>
Resistenza del colore al lavaggio/ Colour fastness to washing	<b>3/4</b>
Ignifugo/ Fireproof	<b>no</b>
Idrorepellente/ Waterproof	<b>no</b>
Antimacchia/ Stain resistant	<b>si</b>



**Mario 103**  
Pant.11-4301



**Mario 100**  
Pant. 12-0404



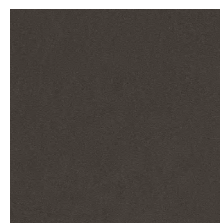
**Mario 806**  
Pant. 14-1106



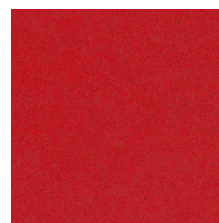
**Mario 412**  
Pant. 14-1209



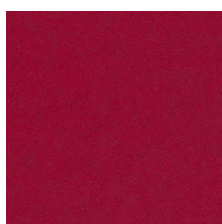
**Mario 603**  
Pant. 18-1015



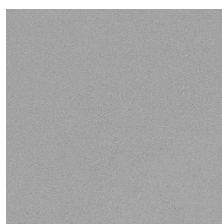
**Mario 609**  
Pant.19-0814



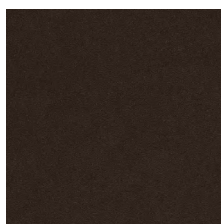
**Mario 319**  
Pant. 18-1550



**Mario 305**  
Pant. 19-1760



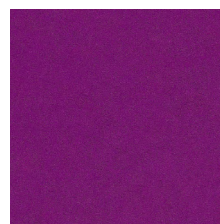
**Mario 610**  
Pant. 16-4402



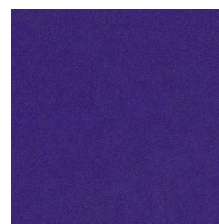
**Mario 405**  
Pant. 19-0712



**Mario 415**  
Pant. 19-0915



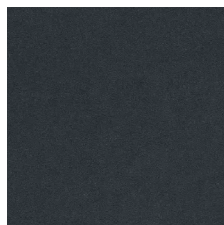
**Mario 008**  
Pant. 18-2527



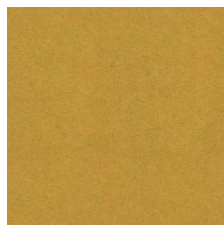
**Mario 009**  
Pant. 19-3737

# A. Mario

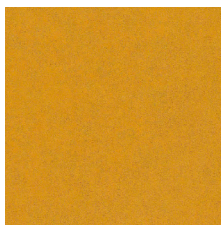
Noctis®



**Mario 626**  
Pant. 19-4019



**Mario 504**  
Pant. 14-0848



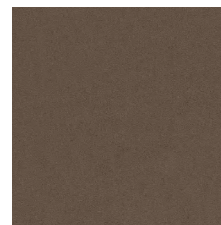
**Mario 503**  
Pant. 16-1054



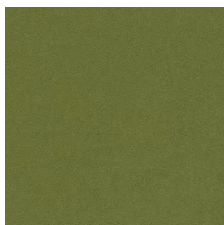
**Mario 604**  
Pant. 16-1107



**Mario 717**  
Pant. 18-5610



**Mario 413**  
Pant. 17-1327



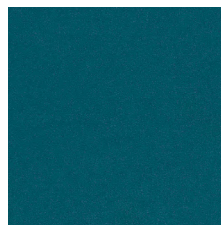
**Mario 808**  
Pant. 18-0435



**Mario 801**  
Pant. 18-6114



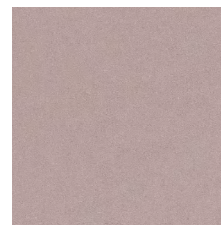
**Mario 007**  
Pant. 19-3316



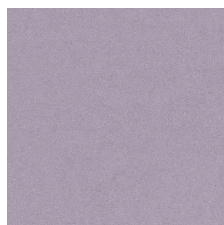
**Mario 809**  
Pant. 18-4834



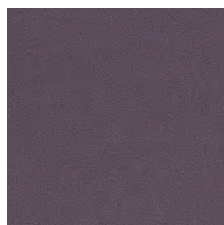
**Mario 611**  
Pant. 19-3906



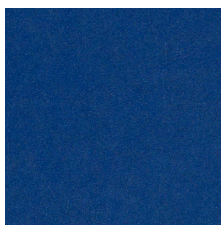
**Mario 006**  
Pant. 16-1508



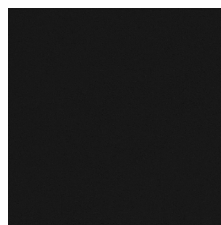
**Mario 001**  
Pant. 15-3508



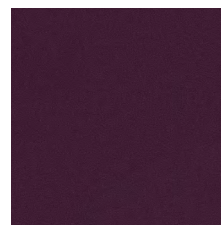
**Mario 715**  
Pant. 19-3316



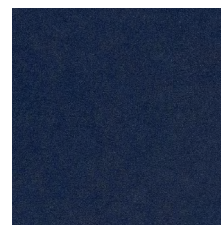
**Mario 701**  
Pant. 19-4050



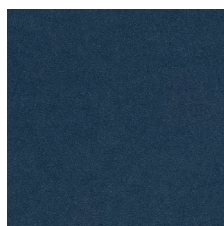
**Mario 200**  
Pant. 19-4006



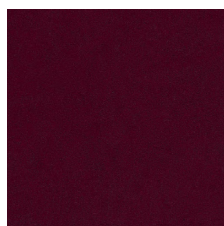
**Mario 010**  
Pant. 19-1623



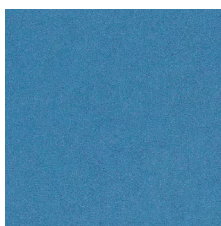
**Mario 704**  
Pant. 19-4027



**Mario 705**  
Pant. 19-4324



**Mario 320**  
Pant. 19-1532

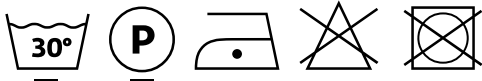
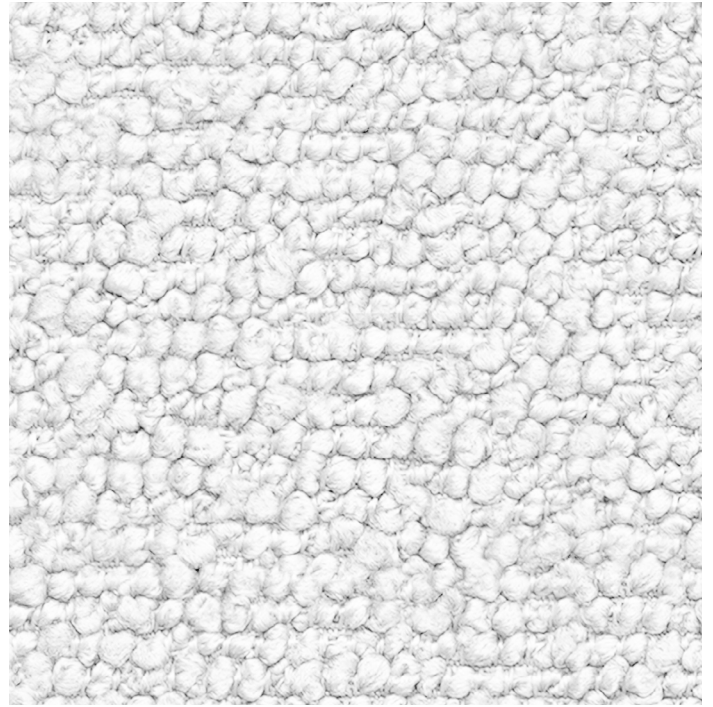


**Mario 700**  
Pant. 18-4036

# B. Crystal

Noctis®

Composizione/ Composition	<b>100% PL</b>
Altezza/ Width	<b>140 cm</b>
Peso/ Weight	(± 4%) <b>575 g/m<sup>2</sup></b>
Resistenza alla luce/ Colour fastness to light	<b>4-5</b>
Martindale	<b>&gt;100.000</b>
Resistenza del colore al lavaggio/ Colour fastness to washing	A secco <b>4/5</b> Ad umido <b>4</b> Rubbing (dry) Rubbing (wet)
Ignifugo/ Fireproof	<b>no</b>
Idrorepellente/ Waterproof	<b>si</b>
Antimacchia/ Stain resistant	<b>no</b>



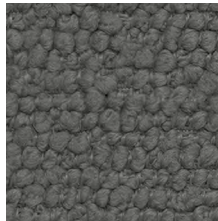
**Crystal 100**  
Pant. 11-4800



**Crystal 400**  
Pant. 12-5202



**Crystal 602**  
Pant. 17-1210



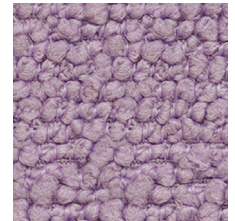
**Crystal 601**  
Pant. 16-4402



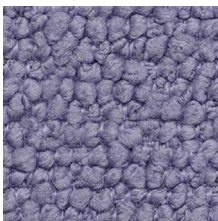
**Crystal 901**  
Pant. 18-1336



**Crystal 900**  
Pant. 15-1316



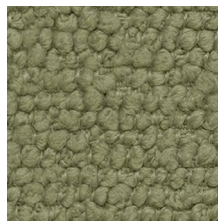
**Crystal 001**  
Pant. 14-2305



**Crystal 003**  
Pant. 16-3810



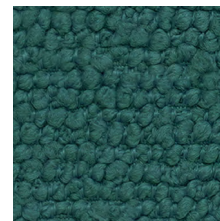
**Crystal 500**  
Pant. 14-0647



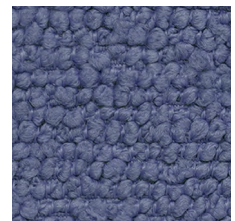
**Crystal 804**  
Pant. 14-0418



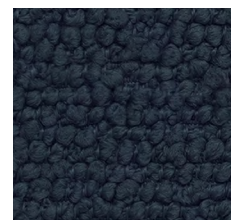
**Crystal 800**  
Pant. 14-4908



**Crystal 803**  
Pant. 18-5121



**Crystal 701**  
Pant. 17-3923

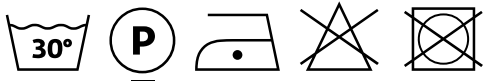
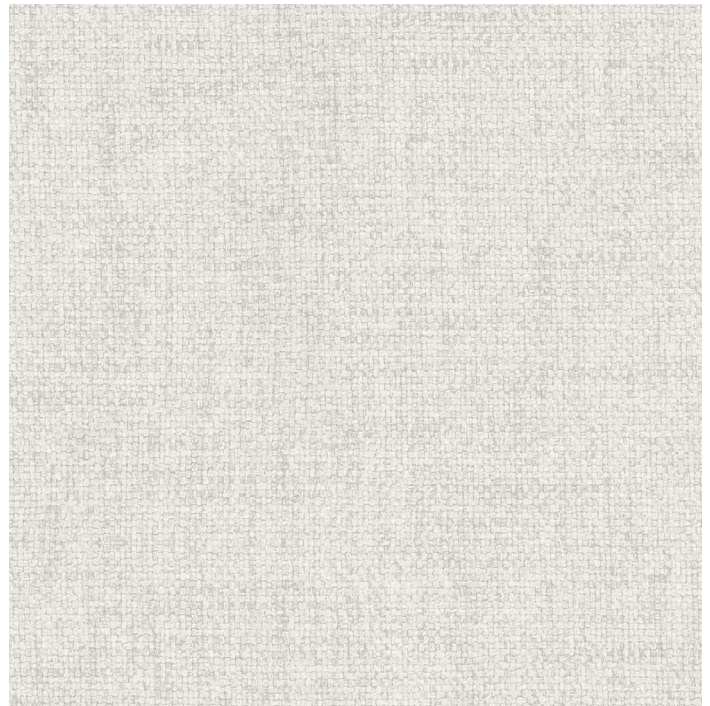


**Crystal 703**  
Pant. 19-4118

# B. Joint

Noctis®

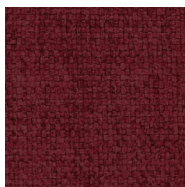
Composizione/ Composition	<b>100% PL</b>
Altezza/ Width	<b>140 cm</b>
Peso/ Weigt	(± 4%) <b>375 g/m<sup>2</sup></b>
Resistenza alla luce/ Colour fastness to light	<b>4</b>
Martindale	<b>60.000</b>
Resistenza del colore al lavaggio/ Colour fastness to washing	<b>4/5</b>
Ignifugo/ Fireproof	<b>no</b>
Idrorepellente/ Waterproof	<b>si</b>
Antimacchia/ Stain resistant	<b>si</b>
Ritiro/ Shrinkge	<b>0%</b>



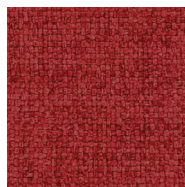
Joint 111



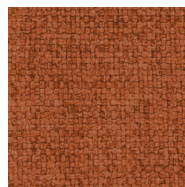
Joint 200



Joint 303



Joint 305



Joint 307



Joint 400



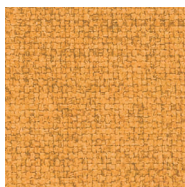
Joint 401



Joint 402



Joint 405



Joint 503



Joint 600



Joint 601



Joint 603



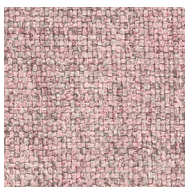
Joint 604



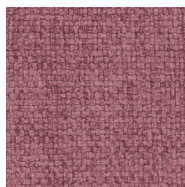
Joint 706



Joint 814



Joint 900

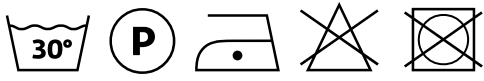
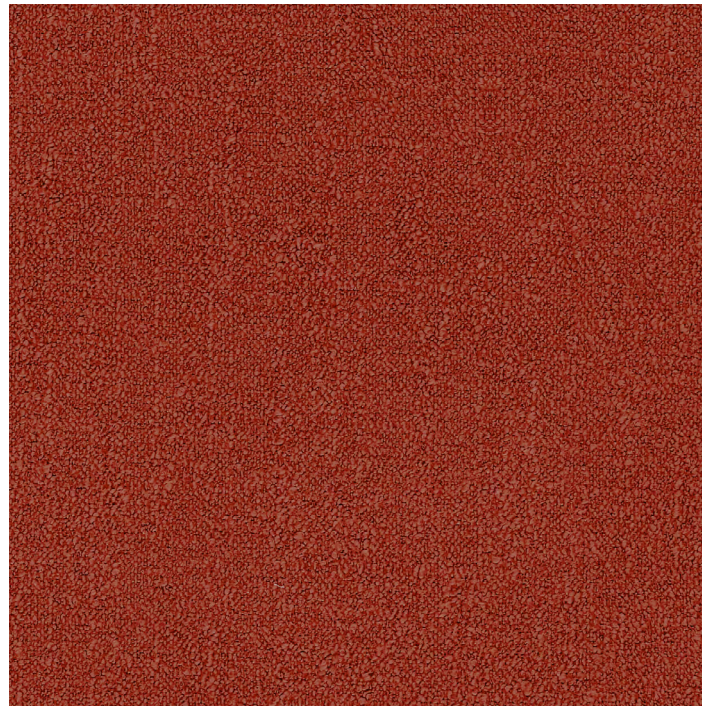


Joint 910

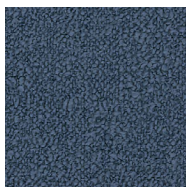
# B. Fluf

Noctis®

Composizione/ Composition	<b>100% PL</b>
Altezza/ Width	<b>140cm</b>
Peso/ Weigt	(± 5 %) <b>440 g/m2</b>
Resistenza alla luce/ Colour fastness to light	<b>4</b>
Martindale	<b>30.000</b>
Resistenza del colore al lavaggio/ Colour fastness to washing	<b>4</b>
Ignifugo/ Fireproof	<b>no</b>
Idrorepellente/ Waterproof	<b>si</b>
Antimacchia/ Stain resistant	<b>si</b>
Residuo restringimento/ Residual shrinkge	<b>2%</b>



Fluf 0010



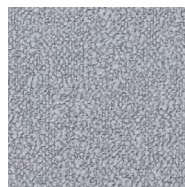
Fluf 0015



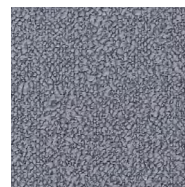
Fluf 0021



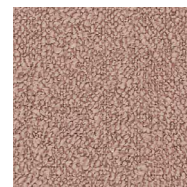
Fluf 0025



Fluf 0031



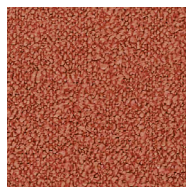
Fluf 0032



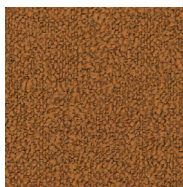
Fluf 0035



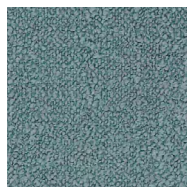
Fluf 0042



Fluf 0043



Fluf 0048



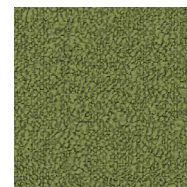
Fluf 0053



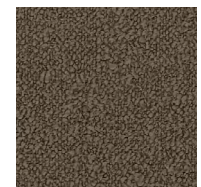
Fluf 0057



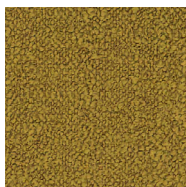
Fluf 0060



Fluf 0062



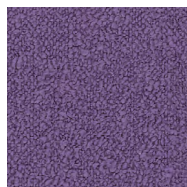
Fluf 0076



Fluf 0081



Fluf 0084



Fluf 0092



Fluf 0100



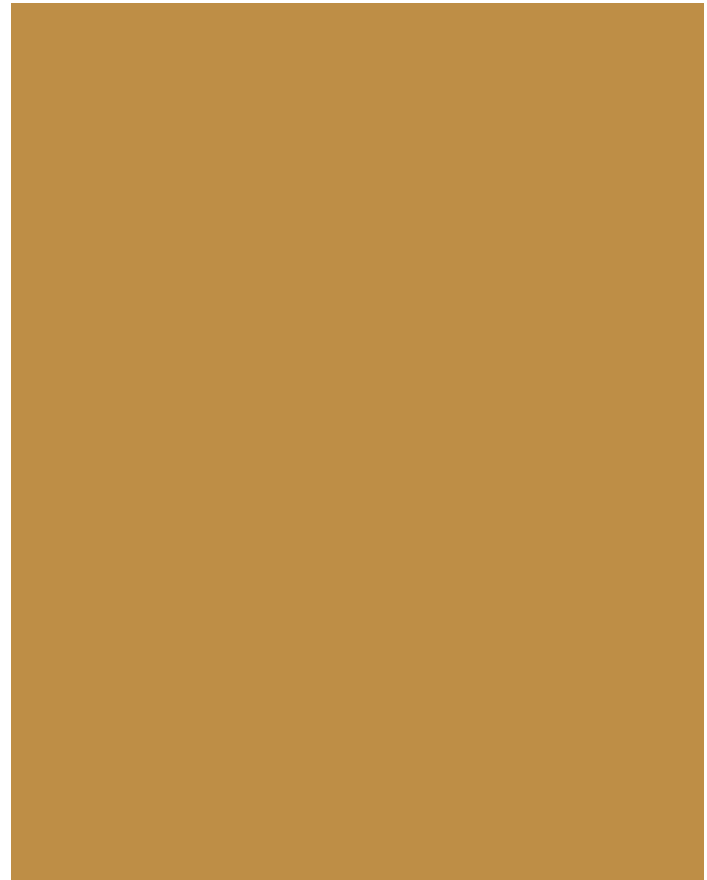
Fluf 0104

# B. Ecopelle Montana

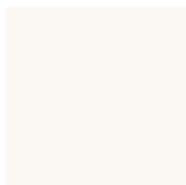
Noctis®

Composizione/ Composition	<b>100% PU</b>
Altezza/ Width	<b>140 cm</b>
Peso/ Weight	(± 5 %) <b>490 g/m</b>
Spessore/ Thickness	<b>1,5 ± 10% mm</b>
Resistenza alla luce/ Colour fastness to light	<b>4/5</b>
Martindale	<b>79.000</b>
Resistenza del colore al lavaggio/ Colour fastness to washing	<b>4/5</b>
Ritiro/ Shrinkage	<b>0%</b>
Ignifugo/ Fireproof	<b>no</b>
Idrorepellente/ Waterproof	<b>no</b>
Antimacchia/ Stain resistant	<b>no</b>

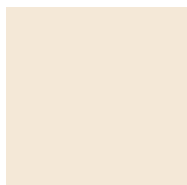
Pulire con panno morbido e umido delicatamente.  
Non usare abrasivi, solventi e detergenti chimici.  
Gently wipe with a soft and damp cloth. Do not use abrasive,  
solvent and chemical detergents



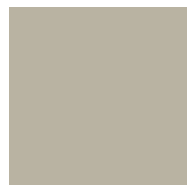
**Odra 1013**



**Bianco 1017**



**Crema 1018**



**Perla 1019**



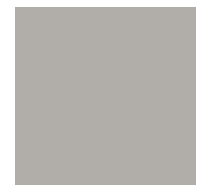
**Nocciola 1020**



**Rosso 1021**



**Vinaccia 1022**



**Grigio Chiaro 1023**



**Fango 1024**



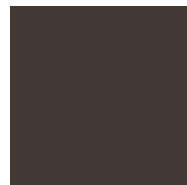
**1025**



**Antracite 1026**



**Testa Moro 1013**



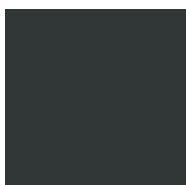
**Marrone 1028**



**Terra 1029**



**Tortora 1030**

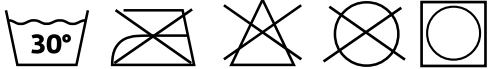


**Nero 1031**

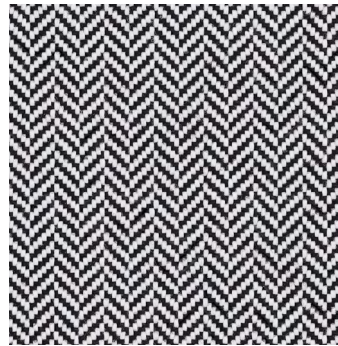
# B. Mare

Composizione/ Composition	<b>100%PP</b>
Altezza/ Width	<b>140 cm</b>
Peso/ Weight	(± 5%) <b>435 g/m<sup>2</sup></b>
Resistenza alla luce/ Colour fastness to light	<b>&gt;4-5</b>
Martindale	<b>≥40.000</b>
Resistenza del colore al lavaggio/ Colour fastness to washing	<b>5</b>
Ignifugo/ Fireproof	<b>no</b>
Idrorepellente/ Waterproof	<b>no</b>
Antimacchia/ Stain resistant	<b>si</b>

Nel caso di macchie secche o particolarmente resistenti si può agire localmente trattando la macchia con uno smacchiatore attivo, sfregare leggermente e lasciar agire qualche minuto, dopodichè effettuare il normale lavaggio in lavatrice a 30°/ Far dry or stubborn stains, use a stain remover and rub gently. Set asi de far a fewminutes and then wash as usual in the washing mach i ne at 30°



**Mare 007**



**Mare 022**



**Mare 026**



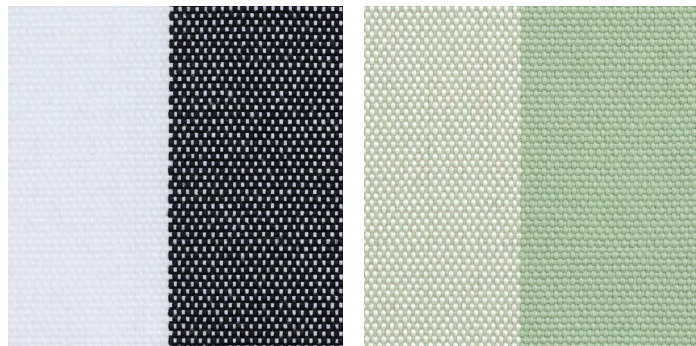
# B. Gita

Composizione/ Composition	<b>100%PP</b>
Altezza/ Width	<b>140 cm</b>
Peso/ Weight	(± 5%) <b>435 g/m<sup>2</sup></b>
Resistenza alla luce/ Colour fastness to light	<b>&gt;4-5</b>
Martindale	<b>≥40.000</b>
Resistenza del colore al lavaggio/ Colour fastness to washing	<b>5</b>
Ignifugo/ Fireproof	<b>no</b>
Idrorepellente/ Waterproof	<b>no</b>
Antimacchia/ Stain resistant	<b>si</b>

Nel caso di macchie secche o particolarmente resistenti si può agire localmente trattando la macchia con uno smacchiatore attivo, sfregare leggermente e lasciar agire qualche minuto, dopodichè effettuare il normale lavaggio in lavatrice a 30°/ Far dry or stubborn stains, use a stain remover and rub gently. Set asi de far a fewminutes and then wash as usual in the washing mach i ne at 30°



Gita 007



Gita 022

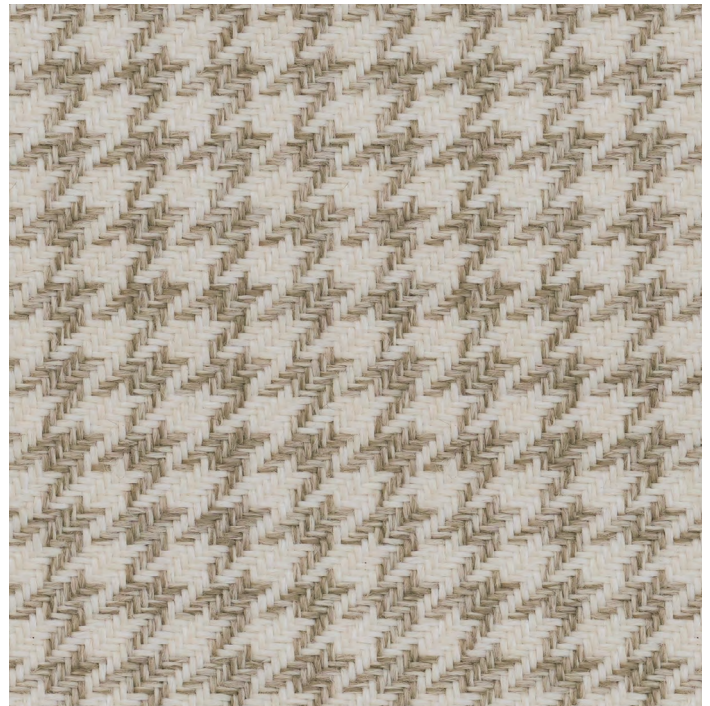
Gita 026

# B. Fresco

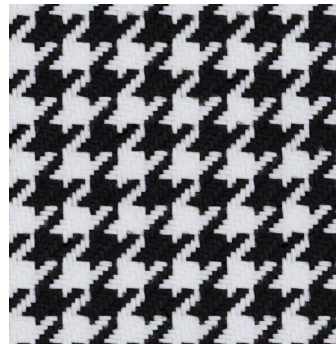
Noctis®

Composizione/ Composition	<b>100%PP</b>
Altezza/ Width	<b>140 cm</b>
Peso/ Weight	(± 5%) <b>490 g/m<sup>2</sup></b>
Resistenza alla luce/ Colour fastness to light	<b>&gt;4-5</b>
Martindale	<b>≥40.000</b>
Resistenza del colore al lavaggio/ Colour fastness to washing	<b>5</b>
Ignifugo/ Fireproof	<b>no</b>
Idrorepellente/ Waterproof	<b>no</b>
Antimacchia/ Stain resistant	<b>si</b>

Nel caso di macchie secche o particolarmente resistenti si può agire localmente trattando la macchia con uno smacchiatore attivo, sfregare leggermente e lasciar agire qualche minuto, dopodichè effettuare il normale lavaggio in lavatrice a 30°/ Far dry or stubborn stains, use a stain remover and rub gently. Set asi de far a fewminutes and then wash as usual in the washing mach i ne at 30°



Fresco 007



Fresco 022



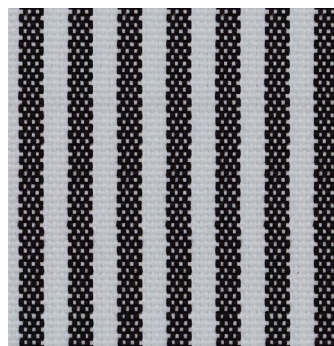
Fresco 026

Composizione/ Composition	<b>100%PP</b>
Altezza/ Width	<b>140 cm</b>
Peso/ Weight	(± 5%) <b>450 g/m2</b>
Resistenza alla luce/ Colour fastness to light	<b>&gt;4-5</b>
Martindale	<b>≥40.000</b>
Resistenza del colore al lavaggio/ Colour fastness to washing	<b>5</b>
Ignifugo/ Fireproof	<b>no</b>
Idrorepellente/ Waterproof	<b>no</b>
Antimacchia/ Stain resistant	<b>si</b>

Nel caso di macchie secche o particolarmente resistenti si può agire localmente trattando la macchia con uno smacchiatore attivo, sfregare leggermente e lasciar agire qualche minuto, dopodichè effettuare il normale lavaggio in lavatrice a 30°/ Far dry or stubborn stains, use a stain remover and rub gently. Set asi de far a fewminutes and then wash as usual in the washing mach i ne at 30°



Erba 007



Erba 022

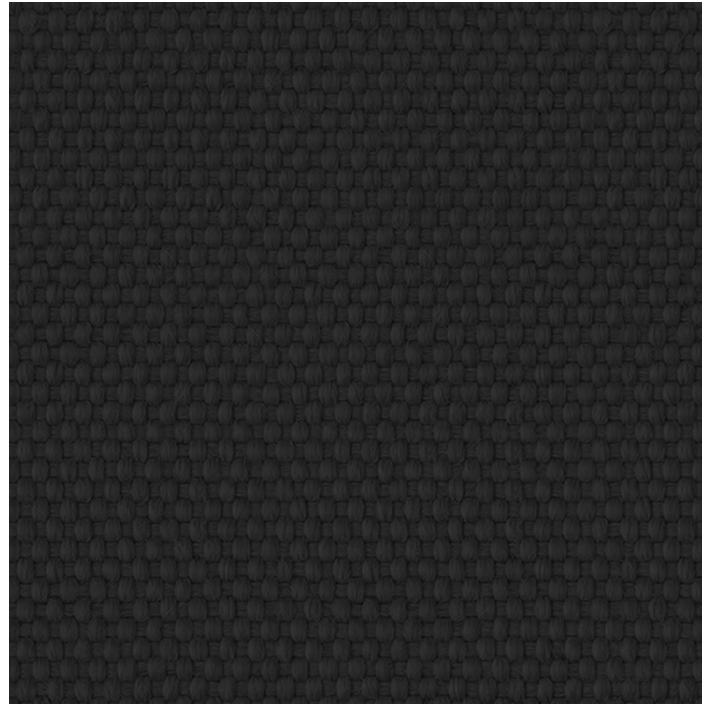


Erba 026

# B. Alba

Noctis®

Composizione/ Composition	<b>100%PP</b>
Altezza/ Width	<b>140 cm</b>
Peso/ Weight	(± 5%) <b>465 g/m2</b>
Resistenza alla luce/ Colour fastness to light	<b>&gt;4-5</b>
Martindale	<b>≥40.000</b>
Resistenza del colore al lavaggio/ Colour fastness to washing	<b>5</b>
Ignifugo/ Fireproof	<b>no</b>
Idrorepellente/ Waterproof	<b>no</b>
Antimacchia/ Stain resistant	<b>si</b>

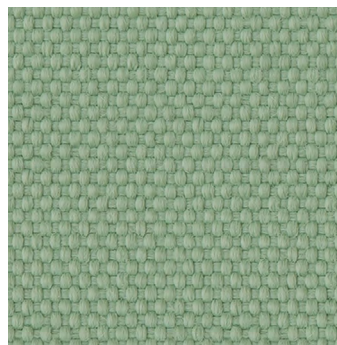


Alba 022

Nel caso di macchie secche o particolarmente resistenti si può agire localmente trattando la macchia con uno smacchiatore attivo, sfregare leggermente e lasciar agire qualche minuto, dopodichè effettuare il normale lavaggio in lavatrice a 30°/ Far dry or stubborn stains, use a stain remover and rub gently. Set asi de far a fewminutes and then wash as usual in the washing mach i ne at 30°



Alba 025



Alba 026



Alba 100



Alba 007

Composizione/ Composition	<b>100 % PL</b>
Altezza/ Width	<b>140 cm</b>
Peso/ Weight	<b>(± 5%) 300 g/m<sup>2</sup></b>
Resistenza alla luce/ Colour fastness to light	<b>4</b>
Martindale	<b>50.000</b>
Resistenza del colore al lavaggio/ Colour fastness to washing	<b>3</b>
Ritiro/ Shrinkage	<b>2%</b>
Ignifugo/ Fireproof	<b>no</b>
Idrorepellente Waterproof	<b>no</b>
Antimacchia Stain resistant	<b>si</b>

**Norme di smacchiatura/ Cleaning instructions** Tamponare tempestivamente i liquidi con panno asciutto o spazzolare lo sporco secco. Dab promptly the fallen liquids with a dry cloth or brush gently the dry dirt.

**Macchie acquose - Bibite, caffè, vino/ Liquid stains - Drink, coffee, wine**  
Asportare i liquidi con carta assorbente o panno asciutto senza esercitare eccessiva pressione sul tessuto. In caso di penetrazione della macchia, strofinare con spugna umida, se necessario usare del sapone neutro da risciacquare abbondantemente con acqua tiepida e spugna pulita. Remove the stain using blotting paper or a dry cloth and avoid any pressure on fabric. In case the stain penetrates the fabric, rub gently with a damp sponge and if necessary, use a neutral soap to be well rinsed with tepid water and a clean sponge.

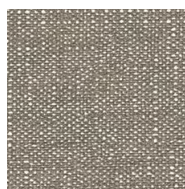
**Macchie oleose - Grasso, salse/ Oily stains - Grease, sauce**  
Tamponare con carta assorbente o panno asciutto senza eccessiva pressione sul tessuto. In caso di penetrazione della macchia, strofinare con spugna umida, se necessario usare del sapone neutro da risciacquare abbondantemente con acqua tiepida e spugna pulita. Dab the stain using blotting paper or a dry cloth and avoid any pressure on fabric. In case the stain penetrates the fabric, rub gently with a damp sponge and if necessary, use a neutral soap to be well rinsed with tepid water and a clean sponge.

**Penna e pennarelli / Pens and drawing pens**  
Agire prima che si asciughi l'inchiostro, passando sulla macchia alcol diluito in acqua, lavare poi con spugna e detersivo neutro per rimuovere l'alone. Before the ink becomes dry, pass on the stain alcohol diluted in water, wash with sponge and neutral soap to remove the mark.

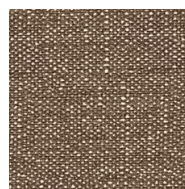
In caso di permanenza della macchia lavare in lavatrice come da norma di manutenzione. In case marks and halos remain, it is recommended to machine wash as per cleaning instructions.



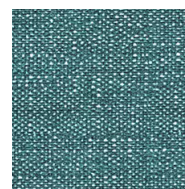
**Bilia 25**  
Pant. 11-4301



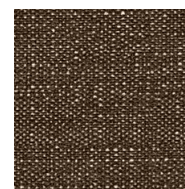
**Bilia 07**  
Pant. 16-0906



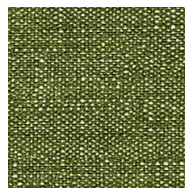
**Bilia 21**  
Pant. 17-1321



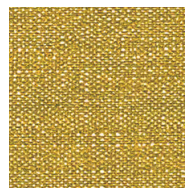
**Bilia 66**  
Pant. 17-4728



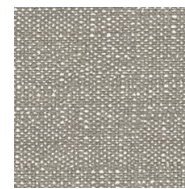
**Bilia 84**  
Pant. 19-1218



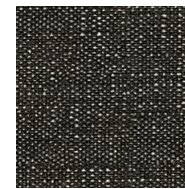
**Bilia 38**  
Pant. 16-0435



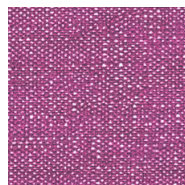
**Bilia 28**  
Pant. 14-1036



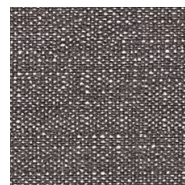
**Bilia 31**  
Pant. 16-0000



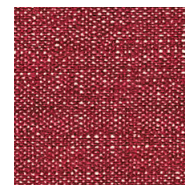
**Bilia 22**  
Pant. 191-0303



**Bilia 105**  
Pant. 18-3230



**Bilia 104**  
Pant. 17-500

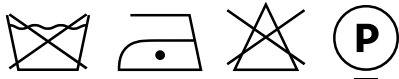
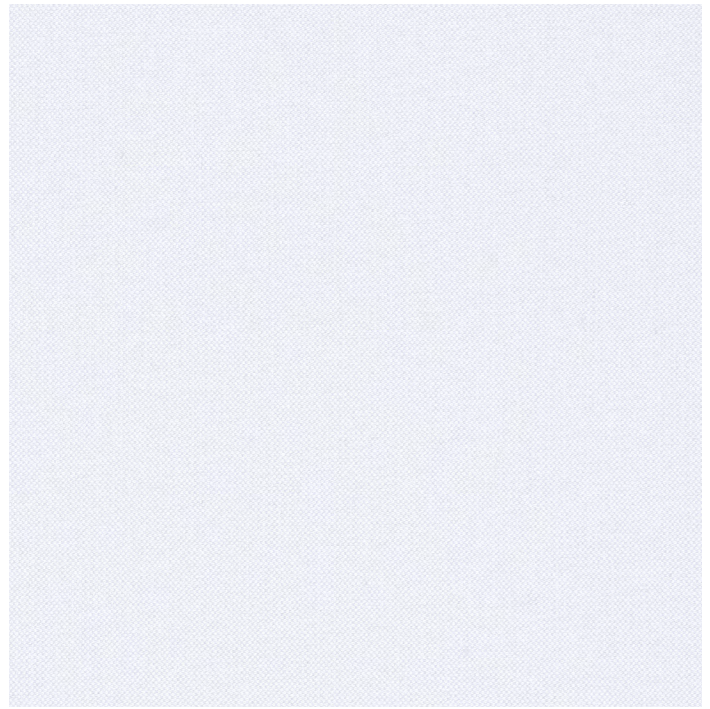


**Bilia 12**  
Pant. 19-1663

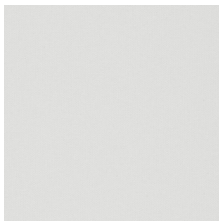
# B. Brando

Noctis®

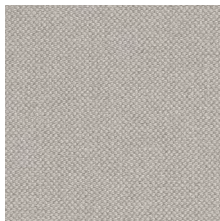
Composizione/ Composition	<b>100 % CO</b>
Altezza/ Width	<b>140 cm</b>
Peso/ Weight	(± 5%) <b>390 g/m2</b>
Resistenza alla luce/ Colour fastness to light	Scuri/ Dark <b>4/5</b>
Martindale	<b>25.000</b>
Resistenza del colore al lavaggio/ Colour fastness to washing	<b>4</b>
Ignifugo Fireproof	<b>no</b>
Idrorepellente Waterproof	<b>no</b>
Antimacchia Stain resistant	<b>no</b>



**Brando 01**  
Pant. 11-4800



**Brando 02**  
Pant. 11-0604



**Brando 03**  
Pant. 13-0607



**Brando 04**  
Pant. 13-1014



**Brando 05**  
Pant. 16-0906



**Brando 06**  
Pant. 19-0814



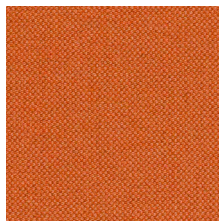
**Brando 07**  
Pant. 17-0510



**Brando 08**  
Pant. 15-0538



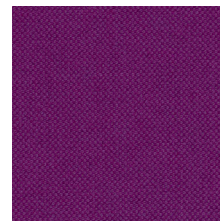
**Brando 11**  
Pant. 15-1142



**Brando 12**  
Pant. 17-1464



**Brando 14**  
Pant. 19-1557

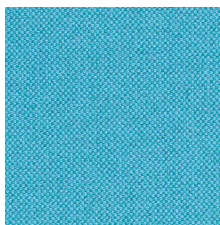


**Brando 18**  
Pant. 19-2431

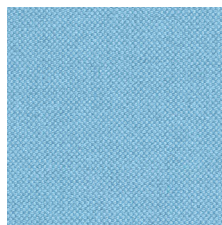


**Brando 20**  
Pant. 18-3615

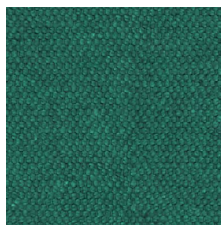
# B. Brando



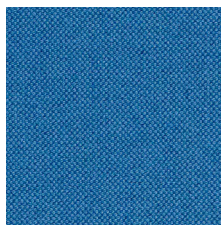
**Brando 22**  
Pant. 16-4725



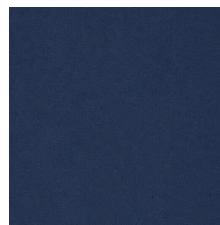
**Brando 23**  
Pant. 15-4323



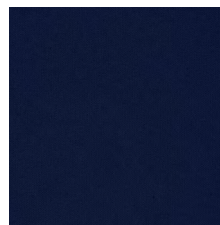
**Brando 24**  
Pant. 17-5025



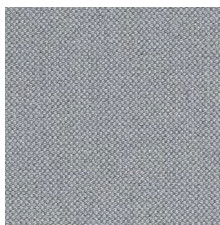
**Brando 25**  
Pant. 18-4141



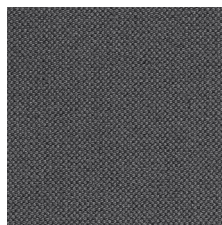
**Brando 26**  
Pant. 19-4118



**Brando 27**  
Pant. 19-3933



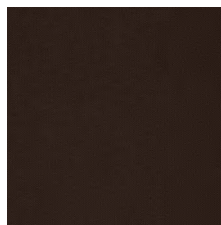
**Brando 28**  
Pant. 17-1501



**Brando 29**  
Pant. 18-0201



**Brando 30**  
Pant. 19-4205



**Brando 33**  
Pant. 19-1111

Composizione/ Composition	<b>100 % PP</b>
Altezza/ Width	<b>140 cm</b>
Peso/ Weight	<b>(± 5%) 271 g/m<sup>2</sup></b>
Resistenza alla luce/ Colour fastness to light	<b>4</b>
Martindale	<b>&gt;30.000</b>
Resistenza del colore al lavaggio/ Colour fastness to washing	<b>4/5</b>
Ritiro/ Shrinkage	<b>2%</b>
Ignifugo/ Fireproof	<b>no</b>
Idrorepellente Waterproof	<b>no</b>
Antimacchia Stain resistant	<b>si</b>

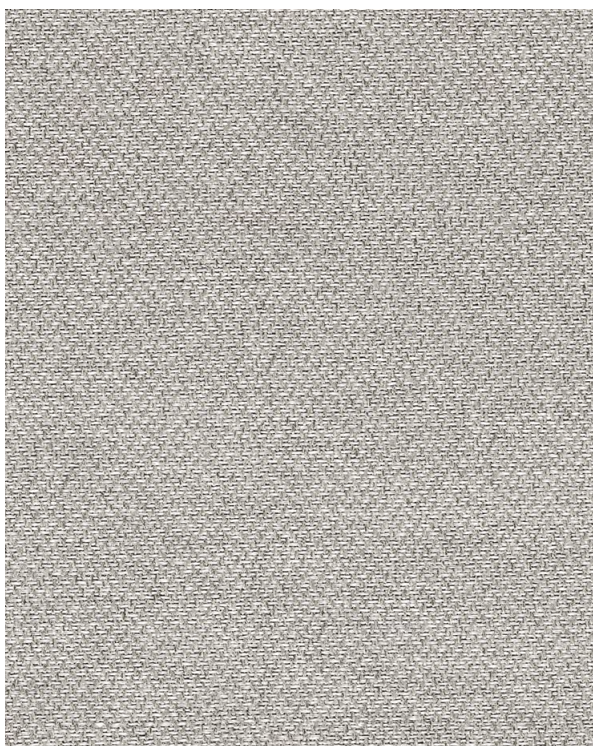
**Norme di smacchiatura/ Cleaning instructions** Tamponare tempestivamente i liquidi con panno asciutto o spazzolare lo sporco secco. Dab promptly the fallen liquids with a dry cloth or brush gently the dry dirt.

**Macchie acquose - Bibite, caffè, vino/ Liquid stains - Drink, coffee, wine**  
Asportare i liquidi con carta assorbente o panno asciutto senza esercitare eccessiva pressione sul tessuto. In caso di penetrazione della macchia, strofinare con spugna umida, se necessario usare del sapone neutro da risciacquare abbondantemente con acqua tiepida e spugna pulita. Remove the stain using blotting paper or a dry cloth and avoid any pressure on fabric. In case the stain penetrates the fabric, rub gently with a damp sponge and if necessary, use a neutral soap to be well rinsed with tepid water and a clean sponge.

**Macchie oleose - Grasso, salse/ Oily stains - Grease, sauce**  
Tamponare con carta assorbente o panno asciutto senza eccessiva pressione sul tessuto. In caso di penetrazione della macchia, strofinare con spugna umida, se necessario usare del sapone neutro da risciacquare abbondantemente con acqua tiepida e spugna pulita. Dab the stain using blotting paper or a dry cloth and avoid any pressure on fabric. In case the stain penetrates the fabric, rub gently with a damp sponge and if necessary, use a neutral soap to be well rinsed with tepid water and a clean sponge.

**Penna e pennarelli / Pens and drawing pens**  
Agire prima che si asciughi l'inchiostro, passando sulla macchia alcol diluito in acqua, lavare poi con spugna e detersivo neutro per rimuovere l'alcol. Before the ink becomes dry, pass on the stain alcohol diluted in water, wash with sponge and neutral soap to remove the mark.

In caso di permanenza della macchia lavare in lavatrice come da norma di manutenzione. In case marks and halos remain, it is recommended to machine wash as per cleaning instructions.



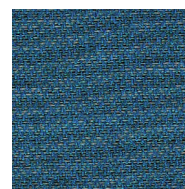
Mira 25



Mira 07



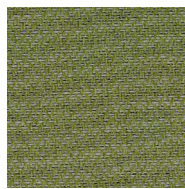
Mira 21



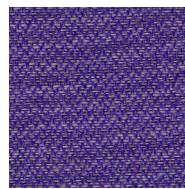
Mira 66



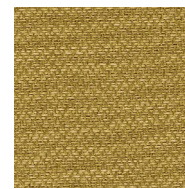
Mira 84



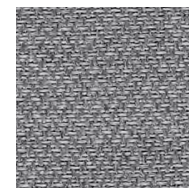
Mira 38



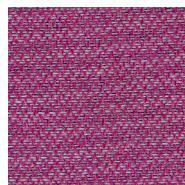
Mira 45



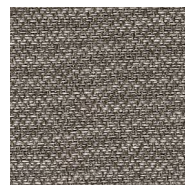
Mira 28



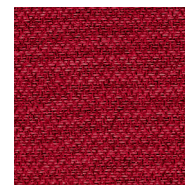
Mira 31



Mira 105



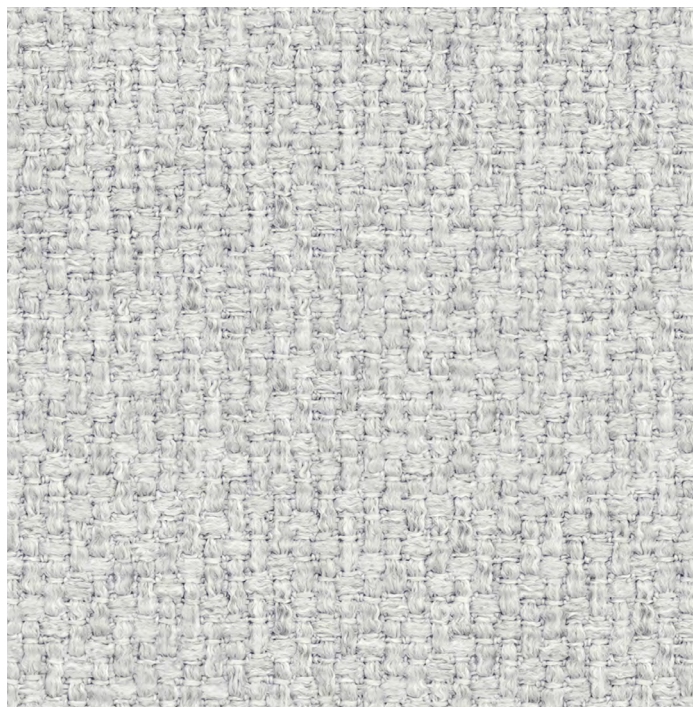
Mira 32



Mira 12



Composizione/ Composition	<b>100% PL</b>
Altezza/ Width	<b>140 cm</b>
Peso/ Weight	(± 4) <b>410 g/m<sup>2</sup></b>
Resistenza alla luce/ Colour fastness to light	<b>4</b>
Martindale	<b>50.000</b>
Resistenza del colore al lavaggio/ Colour fastness to washing	A secco <b>4/5</b> Ad umido <b>4</b> Rubbing (dry) Rubbing (wet)
Ignifugo/ Fireproof	<b>no</b>
Idrorepellente/ Waterproof	<b>si</b>
Antimacchia/ Stain resistant	<b>no</b>



**Bentley 111**  
Pant. 12-4302



**Bentley 408**  
Pant. 13-0905



**Bentley 400**  
Pant. 13-5304



**Bentley 409**  
Pant. 15-1309



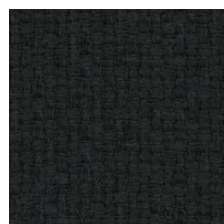
**Bentley 411**  
Pant. 19-0912



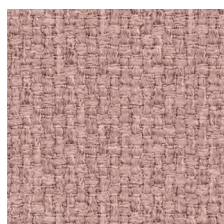
**Bentley 607**  
Pant. 14-4203



**Bentley 609**  
Pant. 17-0205



**Bentley 610**  
Pant. 19-4005



**Bentley 900**  
Pant. 14-1312



**Bentley 003**  
Pant. 18-2109



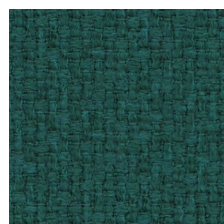
**Bentley 006**  
Pant. 19-3720



**Bentley 500**  
Pant. 16-0947



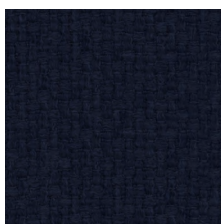
**Bentley 801**  
Pant. 19-5226



**Bentley 802**  
Pant. 17-0510



**Bentley 701**  
Pant. 18-3918



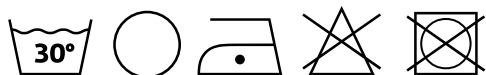
**Bentley 705**  
Pant. 19-3810

# C. Penelope

Noctis®

Composizione/ Composition	<b>100% PL</b>
Altezza/ Width	<b>140 cm</b>
Peso/ Weigt	(± 5%) <b>350 g/m2</b>
Resistenza alla luce/ Colour fastness to light	Scuri/ Dark <b>3</b>
Martindale	<b>&gt;100.000</b>
Resistenza del colore al lavaggio/ Colour fastness to washing	<b>Scarico 5</b> <b>Temperatura dell'acqua</b> <b>40°</b>
Ignifugo/ Fireproof	<b>no</b>
Idrorepellente/ Waterproof	<b>si</b>
Antimacchia/ Stain resistant	<b>no</b>

**Lavaggio** Pulire con un panno umido  
**Care instructions** Wipe it with a damp cloth



Penelope 01



Penelope 03



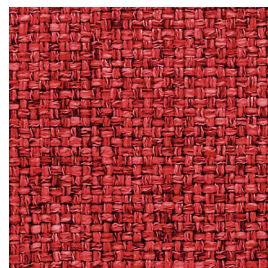
Penelope 05



Penelope 08



Penelope 09



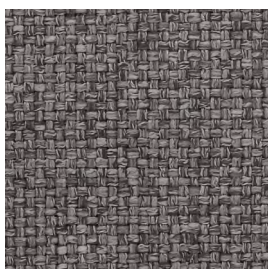
Penelope 12



Penelope 15



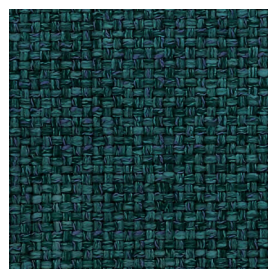
Penelope 20



Penelope 23



Penelope 25



Penelope 27

# C. Silvia

Noctis®

Composizione/ Composition  
Retro/ Backing **100% PU**  
**65% PL + 35% CO**

Altezza/  
Width **142 cm**

Peso/  
Weight **(± 5%)**  
**370 g/m2**

Resistenza alla luce/  
Colour fastness to light **Scuri/ Dark**  
**4/8**

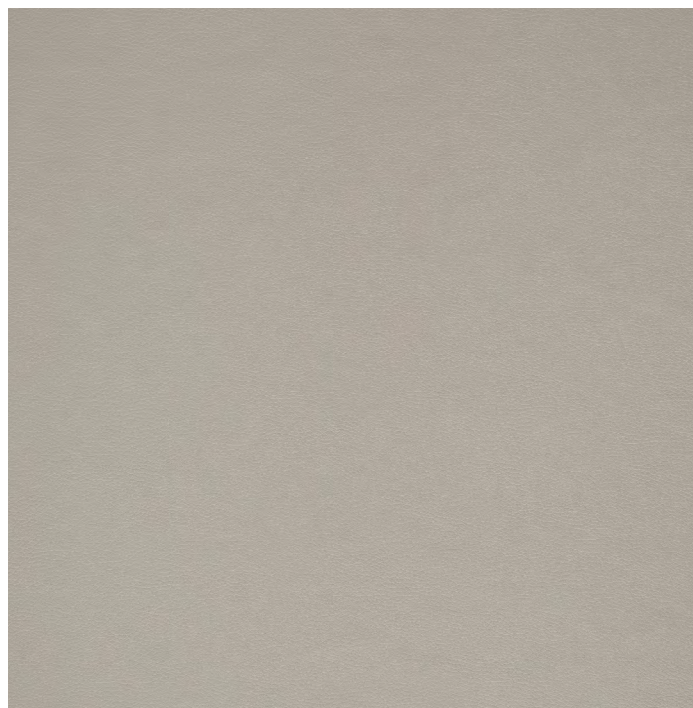
Martindale **20.000**

Resistenza del colore al lavaggio/  
Colour fastness to washing **-**

Ignifugo/  
Fireproof **no**

Idrorepellente/  
Waterproof **no**

Antimacchia/  
Stain resistant **no**

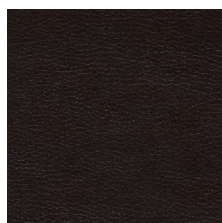


**Lavaggio** Strofinare con movimenti circolare con una spugna e sapone neutro **Care instructions** To clean soiled areas use moist soft sponges or moist soft cotton rags with PH neutral soap

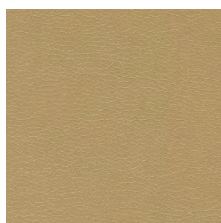
**Silvia 02**  
Pant. 13-1011



**Silvia 01**  
Pant. 11-0601



**Silvia 05**  
Pant. 19-1314



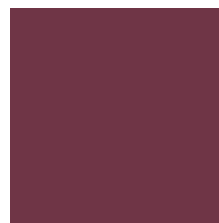
**Silvia 06**  
Pant. 14-0936



**Silvia 10**  
Pant. 17-1654



**Silvia 11**  
Pant. 19-1532



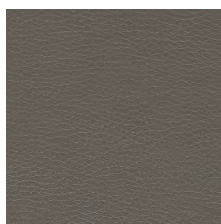
**Silvia 15**  
Pant. 19-2047



**Silvia 18**  
Pant. 19-0303



**Silvia 23**  
Pant. 15-1305



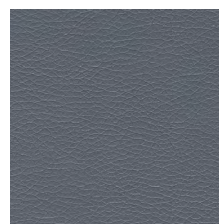
**Silvia 24**  
Pant. 17-1210



**Silvia 27**  
Pant. 19-3230



**Silvia 29**  
Pant. 18-4029



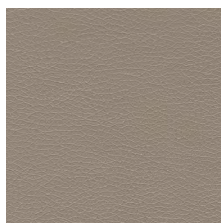
**Silvia 30**  
Pant. 16-3907



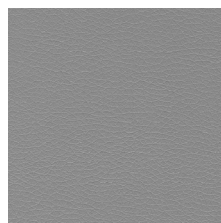
**Silvia 31**  
Pant. 12-0104



**Silvia 500**  
Pant. 11-0103



**Silvia 507**  
Pant. 15-1116



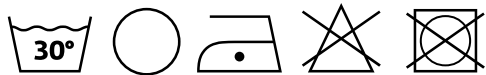
**Silvia 516**  
Pant. 16-3802

# C. Aida

Noctis®

Composizione/ Composition	<b>100% PL</b>
Altezza/ Width	<b>140 cm</b>
Peso/ Weight	(± 5 in greggio) <b>810 g/m2</b>
Resistenza alla luce/ Colour fastness to light	<b>4/5</b>
Martindale	<b>100.000</b>
Resistenza del colore al lavaggio/ Colour fastness to washing	<b>4/5</b>
Ignifugo/ Fireproof	<b>no</b>
Idrorepellente/ Waterproof	<b>si</b>
Antimacchia/ Stain resistant	<b>si</b>

Utilizzare un panno morbido inumidito con la soluzione di acqua e sapone e pulire delicatamente la macchia fino a completa rimozione, risciacquare con acqua pura e asciugare con un panno pulito. /Use a soft cloth moistened with the water solution and soap and gently clean the stain until completely removed, rinse with pure water and dry with a clean cloth.



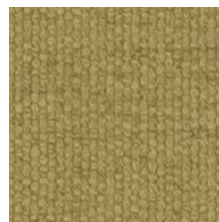
**Aida 01**  
Pant.11-0604



**Aida 04**  
Pant. 15-0000



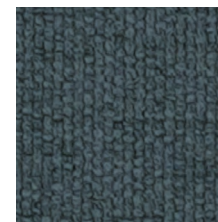
**Aida 05**  
Pant. 17-0205



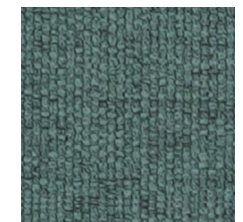
**Aida 11**  
Pant. 14-0837



**Aida 18**  
Pant. 12-2903



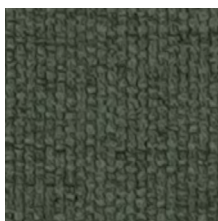
**Aida 19**  
Pant. 18-4320



**Aida 20**  
Pant. 16-5106



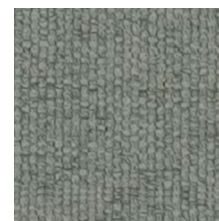
**Aida 21**  
Pant. 19-4025



**Aida 24**  
Pant. 17-6212



**Aida 25**  
Pant. 15-0318



**Aida 26**  
Pant. 13-4303



**Aida 28**  
Pant. 18-4005

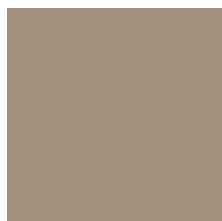
# C. Velluto

Noctis®

Composizione/ Composition	<b>100% PL</b>
Altezza/ Width	<b>145 cm</b>
Peso/ Weight	(± 5 in greggio) <b>360 g/m<sup>2</sup></b>
Resistenza alla luce/ Colour fastness to light	-
Martindale	<b>&gt;45.000</b>
Resistenza del colore al lavaggio/ Colour fastness to washing	<b>5</b>
Ignifugo/ Fireproof	<b>no</b>
Idrorepellente/ Waterproof	<b>no</b>
Antimacchia/ Stain resistant	<b>no</b>



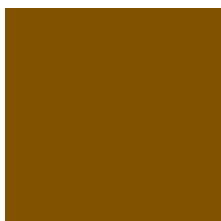
**Velluto 1**  
Pant. 16-1107



**Velluto 2**  
Pant. 15-1309



**Velluto 7**  
Pant. 19-1934



**Velluto 8**  
Pant. 18-0940



**Velluto 9**  
Pant. 18-0430



**Velluto 10**



**Velluto 11**



**Velluto 12**



**Velluto 13**  
Pant. 17-5513



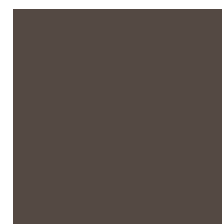
**Velluto 14**  
Pant. 16-1506



**Velluto 15**  
Pant. 16-4402



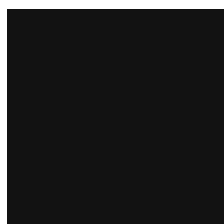
**Velluto 16**  
Pant. 18-0000



**Velluto 17**  
Pant. 18-0403



**Velluto 19**  
Pant. 19-4305



**Velluto 20**  
Pant. 19-4007

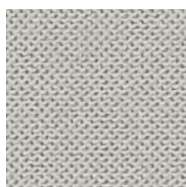
# C. Smile

Noctis®

Composizione/ Composition	<b>100% PL</b>
Altezza/ Width	<b>145 cm</b>
Peso/ Weight	(± 5%) <b>190 g/m<sup>2</sup></b>
Resistenza alla luce/ Colour fastness to light	Scuri/ Dark <b>5</b>
Martindale	<b>&gt;45.000</b>
Resistenza del colore al lavaggio/ Colour fastness to washing	-
Ignifugo/ Fireproof	<b>no</b>
Idrorepellente/ Waterproof	<b>no</b>
Antimacchia/ Stain resistant	<b>no</b>



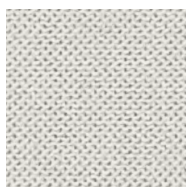
**Smile** 3920  
Pant.19-3933



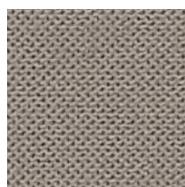
**Smile** 5282  
Pant.14-1106



**Smile** 9000  
Pant.18-0201



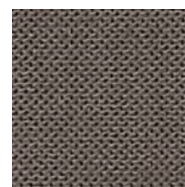
**Smile** 9104  
Pant.11-4800



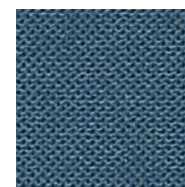
**Smile** 9120  
Pant.16-1406



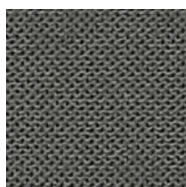
**Smile** 9303  
Pant.19-0303



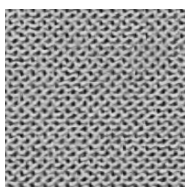
**Smile** 9306  
Pant.17-1506



**Smile** 9329  
Pant.18-4225



**Smile** 9403  
Pant.18-0000

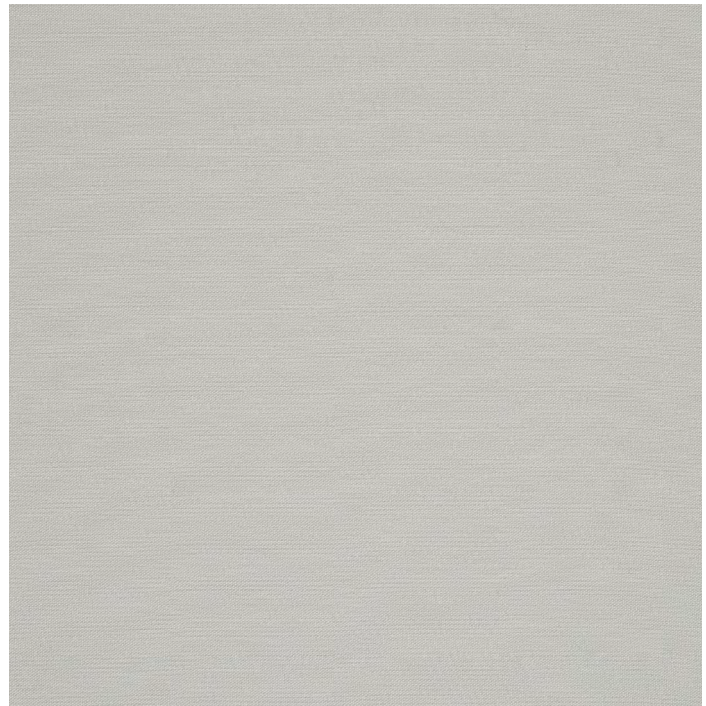


**Smile** 9802  
Pant.16-4402

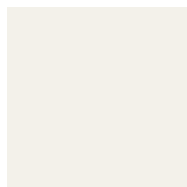
# C. Panama

Noctis®

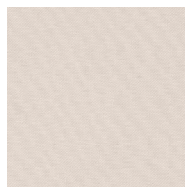
Composizione/ Composition	<b>100% CO</b>
Altezza/ Width	<b>305 cm</b> (± 2cm in greggio)
Peso/ Weigt	(± 5 in greggio) <b>210 g/m2</b>
Resistenza alla luce/ Colour fastness to light	<b>3/4</b>
Martindale	-
Resistenza del colore al lavaggio/ Colour fastness to washing	<b>5</b>
Ignifugo/ Fireproof	<b>no</b>
Idrorepellente/ Waterproof	<b>no</b>
Antimacchia/ Stain resistant	<b>no</b>
Residuo restringimento/ Residual shrinkge	<b>4%</b>



**Panama 117**  
Pant.14-4201



**Panama 320**  
Pant. 11-0501



**Panama 450**  
Pant. 12-1403



**Panama 119**  
Pant.15-1305



**Panama 116**  
Pant.18-1112



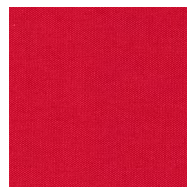
**Panama 780**  
Pant.19-0814



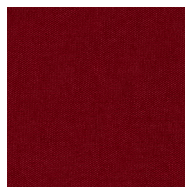
**Panama 409**  
Pant.14-1036



**Panama 38**  
Pant.16-1255



**Panama 355**  
Pant.18-1660



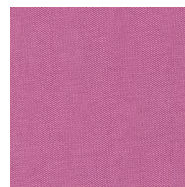
**Panama 361**  
Pant.19-1650



**Panama 786**  
Pant.18-3615



**Panama 570**  
Pant.18-3715



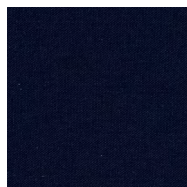
**Panama 118**  
Pant.17-2227



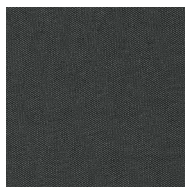
**Panama 360**  
Pant.16-0230



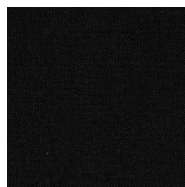
**Panama 256**  
Pant.18-4020



**Panama 380**  
Pant.19-3938

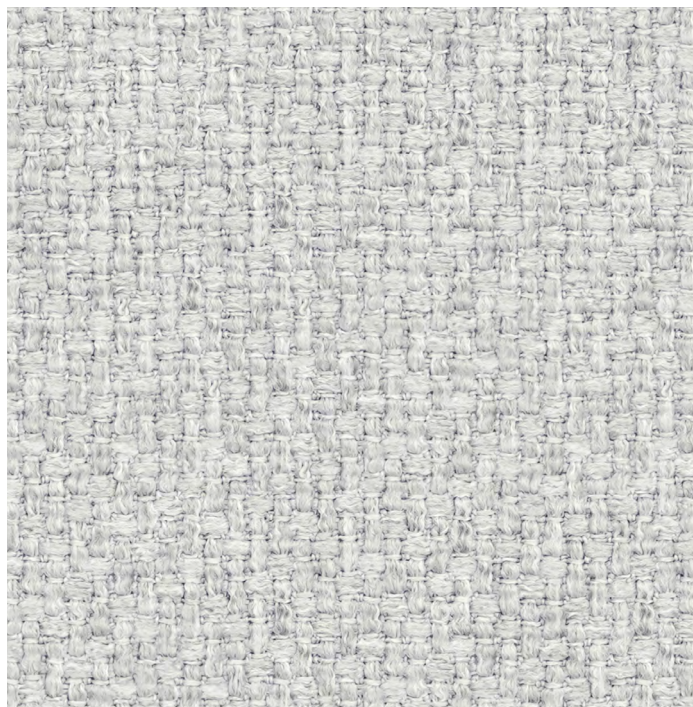


**Panama 512**  
Pant.18-0201



**Panama 324**  
Pant.19-4006

Composizione/ Composition	<b>100% PL</b>
Altezza/ Width	<b>140 cm</b>
Peso/ Weight	(± 4) <b>410 g/m<sup>2</sup></b>
Resistenza alla luce/ Colour fastness to light	<b>4</b>
Martindale	<b>50.000</b>
Resistenza del colore al lavaggio/ Colour fastness to washing	A secco <b>4/5</b> Ad umido <b>4</b> Rubbing (dry) Rubbing (wet)
Ignifugo/ Fireproof	<b>no</b>
Idrorepellente/ Waterproof	<b>si</b>
Antimacchia/ Stain resistant	<b>no</b>



**Bentley 111**  
Pant. 12-4302



**Bentley 408**  
Pant. 13-0905



**Bentley 400**  
Pant. 13-5304



**Bentley 409**  
Pant. 15-1309



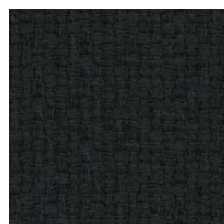
**Bentley 411**  
Pant. 19-0912



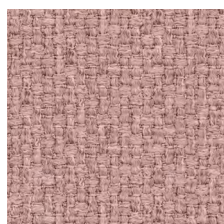
**Bentley 607**  
Pant. 14-4203



**Bentley 609**  
Pant. 17-0205



**Bentley 610**  
Pant. 19-4005



**Bentley 900**  
Pant. 14-1312



**Bentley 003**  
Pant. 18-2109



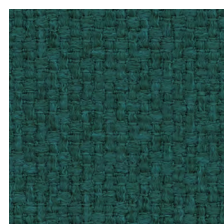
**Bentley 006**  
Pant. 19-3720



**Bentley 500**  
Pant. 16-0947



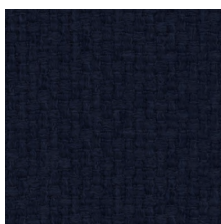
**Bentley 801**  
Pant. 19-5226



**Bentley 802**  
Pant. 17-0510



**Bentley 701**  
Pant. 18-3918



**Bentley 705**  
Pant. 19-3810



# C. Penelope

Noctis®

Composizione/ Composition	<b>100% PL</b>
Altezza/ Width	<b>140 cm</b>
Peso/ Weigt	(± 5%) <b>350 g/m2</b>
Resistenza alla luce/ Colour fastness to light	Scuri/ Dark <b>3</b>
Martindale	<b>&gt;100.000</b>
Resistenza del colore al lavaggio/ Colour fastness to washing	<b>Scarico 5</b> <b>Temperatura dell'acqua</b> <b>40°</b>
Ignifugo/ Fireproof	<b>no</b>
Idrorepellente/ Waterproof	<b>si</b>
Antimacchia/ Stain resistant	<b>no</b>

**Lavaggio** Pulire con un panno umido  
**Care instructions** Wipe it with a damp cloth



Penelope 01



Penelope 03



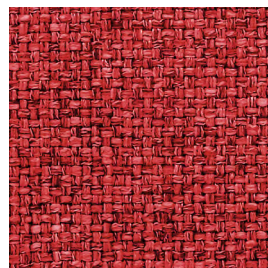
Penelope 05



Penelope 08



Penelope 09



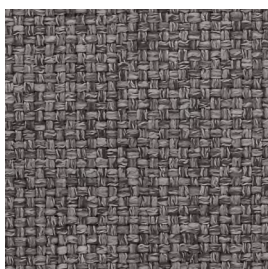
Penelope 12



Penelope 15



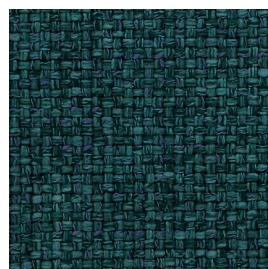
Penelope 20



Penelope 23



Penelope 25



Penelope 27

# C. Silvia

Noctis®

Composizione/ Composition  
Retro/ Backing **100% PU**  
**65% PL + 35% CO**

Altezza/  
Width **142 cm**

Peso/  
Weight **(± 5%)**  
**370 g/m2**

Resistenza alla luce/  
Colour fastness to light **Scuri/ Dark**  
**4/8**

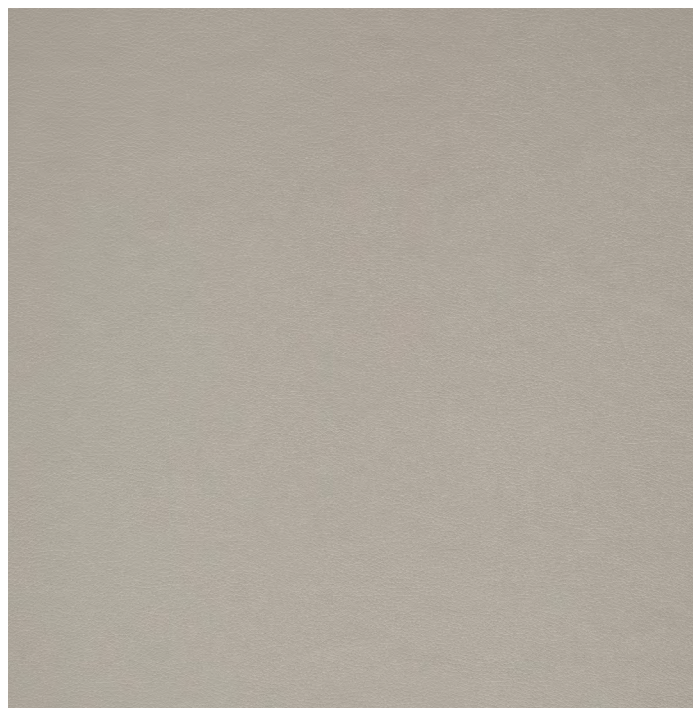
Martindale **20.000**

Resistenza del colore al lavaggio/  
Colour fastness to washing **-**

Ignifugo/  
Fireproof **no**

Idrorepellente/  
Waterproof **no**

Antimacchia/  
Stain resistant **no**

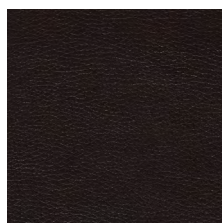


**Lavaggio** Strofinare con movimenti circolare con una spugna e sapone neutro **Care instructions** To clean soiled areas use moist soft sponges or moist soft cotton rags with PH neutral soap

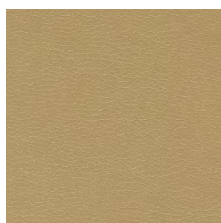
**Silvia 02**  
Pant. 13-1011



**Silvia 01**  
Pant. 11-0601



**Silvia 05**  
Pant. 19-1314



**Silvia 06**  
Pant. 14-0936



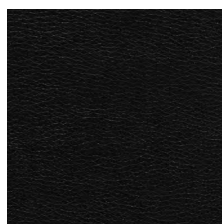
**Silvia 10**  
Pant. 17-1654



**Silvia 11**  
Pant. 19-1532



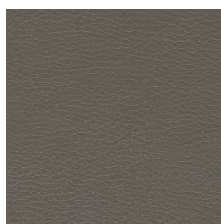
**Silvia 15**  
Pant. 19-2047



**Silvia 18**  
Pant. 19-0303



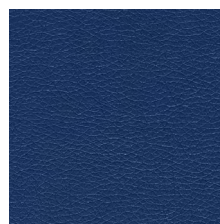
**Silvia 23**  
Pant. 15-1305



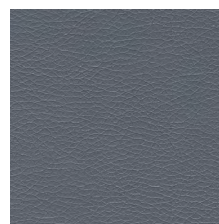
**Silvia 24**  
Pant. 17-1210



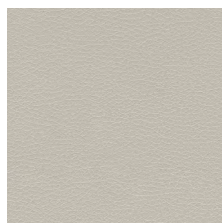
**Silvia 27**  
Pant. 19-3230



**Silvia 29**  
Pant. 18-4029



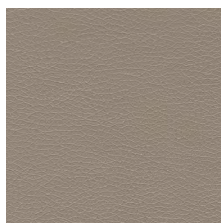
**Silvia 30**  
Pant. 16-3907



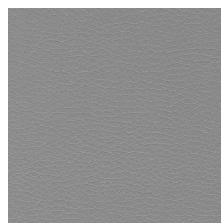
**Silvia 31**  
Pant. 12-0104



**Silvia 500**  
Pant. 11-0103



**Silvia 507**  
Pant. 15-1116



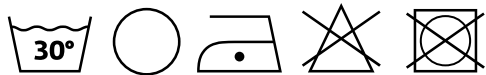
**Silvia 516**  
Pant. 16-3802

# C. Aida

Noctis®

Composizione/ Composition	<b>100% PL</b>
Altezza/ Width	<b>140 cm</b>
Peso/ Weight	(± 5 in greggio) <b>810 g/m2</b>
Resistenza alla luce/ Colour fastness to light	<b>4/5</b>
Martindale	<b>100.000</b>
Resistenza del colore al lavaggio/ Colour fastness to washing	<b>4/5</b>
Ignifugo/ Fireproof	<b>no</b>
Idrorepellente/ Waterproof	<b>si</b>
Antimacchia/ Stain resistant	<b>si</b>

Utilizzare un panno morbido inumidito con la soluzione di acqua e sapone e pulire delicatamente la macchia fino a completa rimozione, risciacquare con acqua pura e asciugare con un panno pulito. /Use a soft cloth moistened with the water solution and soap and gently clean the stain until completely removed, rinse with pure water and dry with a clean cloth.



**Aida 01**  
Pant.11-0604



**Aida 04**  
Pant. 15-0000



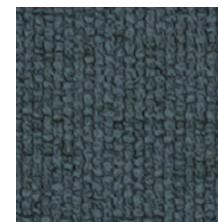
**Aida 05**  
Pant. 17-0205



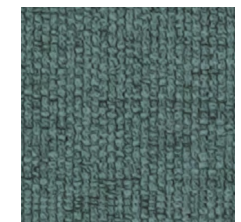
**Aida 11**  
Pant. 14-0837



**Aida 18**  
Pant. 12-2903



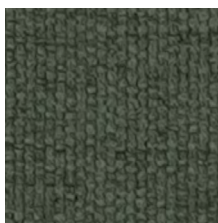
**Aida 19**  
Pant. 18-4320



**Aida 20**  
Pant. 16-5106



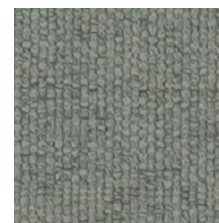
**Aida 21**  
Pant. 19-4025



**Aida 24**  
Pant. 17-6212



**Aida 25**  
Pant. 15-0318



**Aida 26**  
Pant. 13-4303



**Aida 28**  
Pant. 18-4005

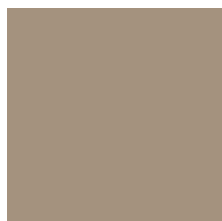
# C. Velluto

Noctis®

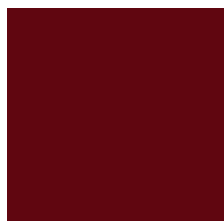
Composizione/ Composition	<b>100% PL</b>
Altezza/ Width	<b>145 cm</b>
Peso/ Weight	(± 5 in greggio) <b>360 g/m<sup>2</sup></b>
Resistenza alla luce/ Colour fastness to light	-
Martindale	<b>&gt;45.000</b>
Resistenza del colore al lavaggio/ Colour fastness to washing	<b>5</b>
Ignifugo/ Fireproof	<b>no</b>
Idrorepellente/ Waterproof	<b>no</b>
Antimacchia/ Stain resistant	<b>no</b>



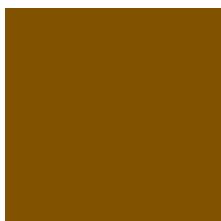
**Velluto 1**  
Pant. 16-1107



**Velluto 2**  
Pant. 15-1309



**Velluto 7**  
Pant. 19-1934



**Velluto 8**  
Pant. 18-0940



**Velluto 9**  
Pant. 18-0430



**Velluto 10**



**Velluto 11**



**Velluto 12**



**Velluto 13**  
Pant. 17-5513



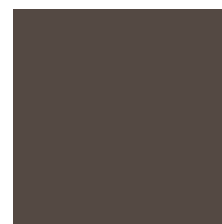
**Velluto 14**  
Pant. 16-1506



**Velluto 15**  
Pant. 16-4402



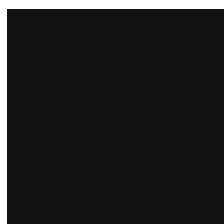
**Velluto 16**  
Pant. 18-0000



**Velluto 17**  
Pant. 18-0403



**Velluto 19**  
Pant. 19-4305



**Velluto 20**  
Pant. 19-4007

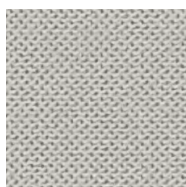
# C. Smile

Noctis®

Composizione/ Composition	<b>100% PL</b>
Altezza/ Width	<b>145 cm</b>
Peso/ Weight	(± 5%) <b>190 g/m2</b>
Resistenza alla luce/ Colour fastness to light	Scuri/ Dark <b>5</b>
Martindale	<b>&gt;45.000</b>
Resistenza del colore al lavaggio/ Colour fastness to washing	-
Ignifugo/ Fireproof	<b>no</b>
Idrorepellente/ Waterproof	<b>no</b>
Antimacchia/ Stain resistant	<b>no</b>



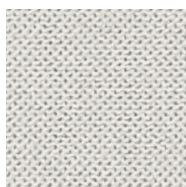
**Smile** 3920  
Pant.19-3933



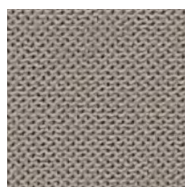
**Smile** 5282  
Pant.14-1106



**Smile** 9000  
Pant.18-0201



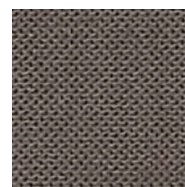
**Smile** 9104  
Pant.11-4800



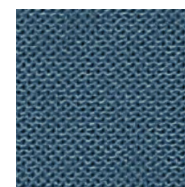
**Smile** 9120  
Pant.16-1406



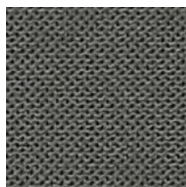
**Smile** 9303  
Pant.19-0303



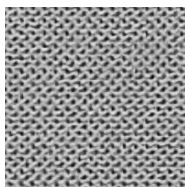
**Smile** 9306  
Pant.17-1506



**Smile** 9329  
Pant.18-4225



**Smile** 9403  
Pant.18-0000

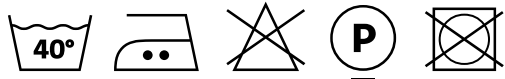
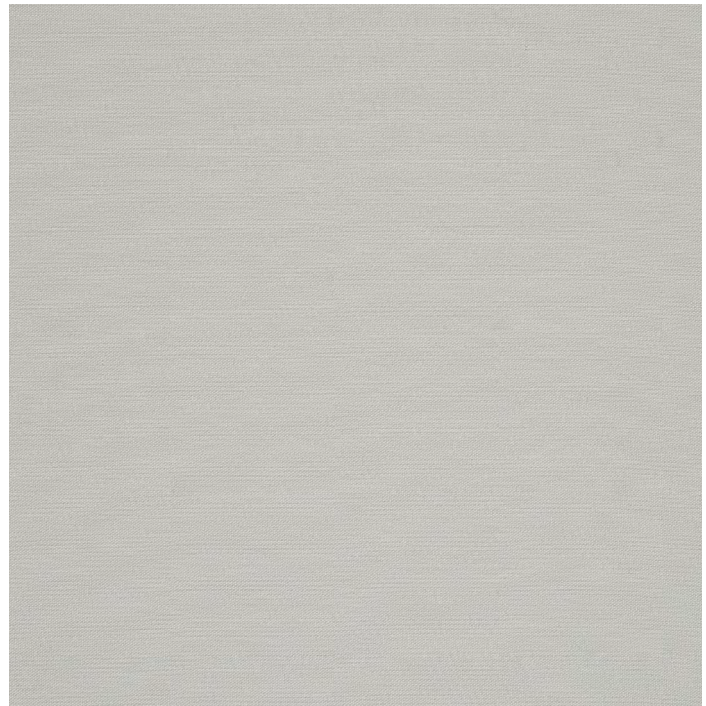


**Smile** 9802  
Pant.16-4402

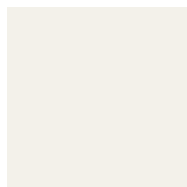
# C. Panama

Noctis®

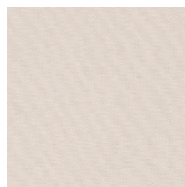
Composizione/ Composition	<b>100% CO</b>
Altezza/ Width	<b>305 cm</b> (± 2cm in greggio)
Peso/ Weigt	(± 5 in greggio) <b>210 g/m2</b>
Resistenza alla luce/ Colour fastness to light	<b>3/4</b>
Martindale	-
Resistenza del colore al lavaggio/ Colour fastness to washing	<b>5</b>
Ignifugo/ Fireproof	<b>no</b>
Idrorepellente/ Waterproof	<b>no</b>
Antimacchia/ Stain resistant	<b>no</b>
Residuo restringimento/ Residual shrinkge	<b>4%</b>



**Panama 117**  
Pant.14-4201



**Panama 320**  
Pant. 11-0501



**Panama 450**  
Pant. 12-1403



**Panama 119**  
Pant.15-1305



**Panama 116**  
Pant.18-1112



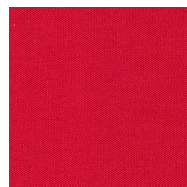
**Panama 780**  
Pant.19-0814



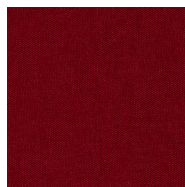
**Panama 409**  
Pant.14-1036



**Panama 38**  
Pant.16-1255



**Panama 355**  
Pant.18-1660



**Panama 361**  
Pant.19-1650



**Panama 786**  
Pant.18-3615



**Panama 570**  
Pant.18-3715



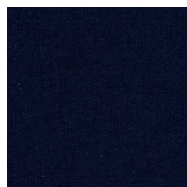
**Panama 118**  
Pant.17-2227



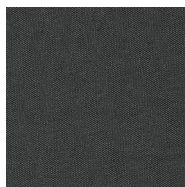
**Panama 360**  
Pant.16-0230



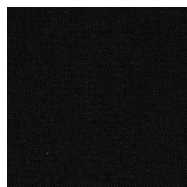
**Panama 256**  
Pant.18-4020



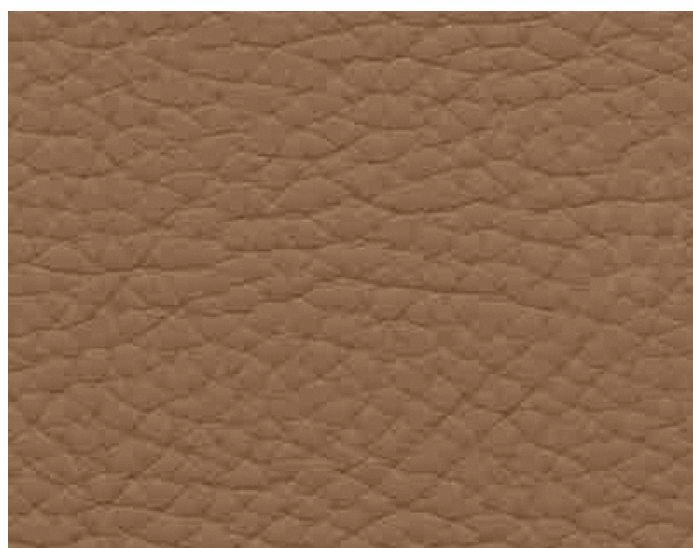
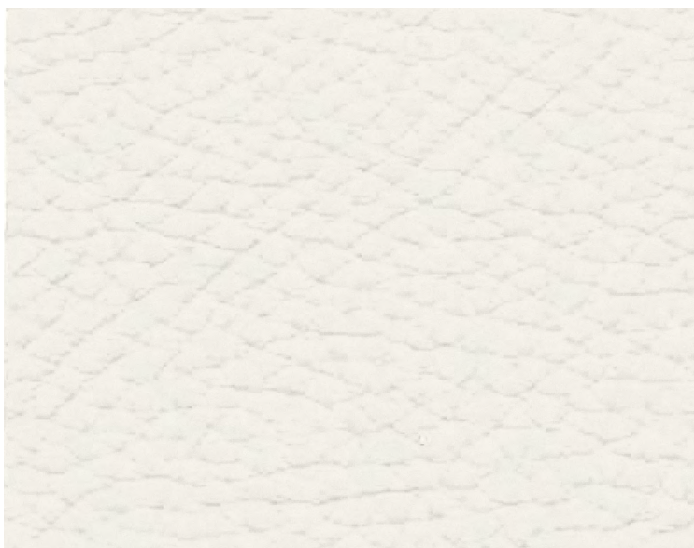
**Panama 380**  
Pant.19-3938



**Panama 512**  
Pant.18-0201

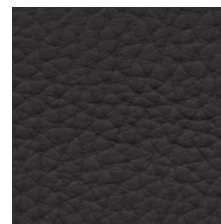
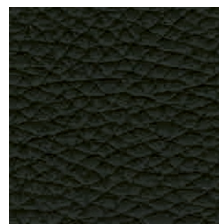
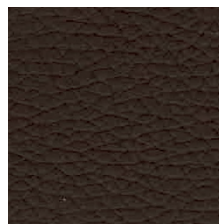
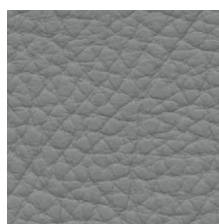


**Panama 324**  
Pant.19-4006



**Levante 200**  
Pant. 11-4800

**Levante 211**  
Pant. 17-1226



**Levante 218**  
Pant. 16-0000

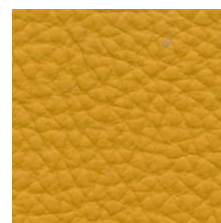
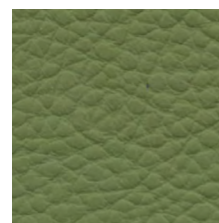
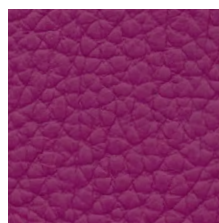
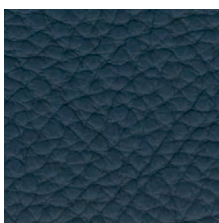
**Levante 210**  
Pant. 12-5202

**Levante 215**  
Pant. 18-1110

**Levante 212**  
Pant. 19-1015

**Levante 202**  
Pant. 19-4006

**Levante 220**  
Pant. 18-0403



**Levante 222**  
Pant. 19-4241

**Levante 232**  
Pant. 14-1307

**Levante 238**  
Pant. 17-4408

**Levante 216**  
Pant. 19-2431

**Levante 225**  
Pant. 17-0330

**Levante 224**  
Pant. 15-1050

Tipo di pellame/ Hyde type		<b>Caratteristiche tecniche/ Technical datasheet</b>			
Concia/ Tanning		<b>Test</b>	<b>Norma/ Method</b>	<b>Valori/ Result</b>	<b>Scala/ Grade</b>
Bovino Europeo/ European bovine	Al cromo/ Chrome	Sfregamento a secco/ Dry friction	<b>ISO 11640</b>	<b>≥1.000</b>	<b>Cicly/ Cycles</b>
Tintura / Dyeing	Passante/ Penetrating	Sfregamento a umido/ Damp friction	<b>ISO 11640</b>	<b>≥200</b>	<b>Cicly/ Cycles</b>
Rifinitone/ Finishing	Pigmentata/ Pigment	Ancoraggio rifinitone/ Finish locking	<b>ISO 11644</b>	<b>≥2,0 N/ 10 mm</b>	
Superficie/ Surface	Fiore corretto/ Corrected grain	Fatica a flessione/ Crocking fatigue	<b>ISO 5402</b>	<b>≥20.000</b>	<b>Cicly/ Cycles</b>
Spessore/ Thickness	1,4 - 1,6 mm	Solidità alla luce/ Solidity in light	<b>ISO 105-Bo2</b>	<b>≥5</b>	<b>Grigi/ Grey</b>
Taglia media/ Average size	≥4,0 mq				

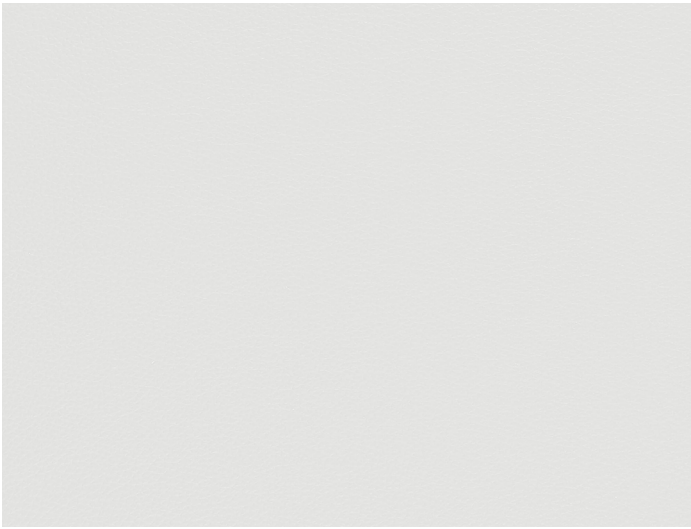
Per quanto riguarda la manutenzione vi informiamo che la nostra pelle è facilmente pulibile con acqua e sapone neutro. Vi rammentiamo che la pelle nei colori chiari è più sensibile allo sporco e richiede una regolare ed attenta pulizia, per evitare che lo sporco venga assorbito e non possa più essere rimosso.

As regards care instructions we inform you our Leather is easily washable with water and neutral soap. We remind you leather in clear colors is more sensitive to dirt and demands a regular and attentive cleaning to avoid dirt to be absorbed and no longer removed.

L'ottima qualità della pelle Levante deriva da un' accurata selezione di bovini di origine europea. **Levante Leather** è un fiore corretto. Il procedimento di tintura è passante, nella stessa tinta della rifinitone. La superficie di ciascuna pelle è di circa 4,0 m<sup>2</sup>, lo spessore di 1,4 - 1,6 mm. Tutti i colori sono disponibili con trattamento ignifugo e certificazione UNI9175 e BS 5852 Crib 5 con un minimo di 50 mq.

The excellent quality of Levante leather derives from an accurate selection of European bovine. **Levante Leather** is a corrected grain. Dyeing procedure is penetrating in the same color of the Finishing. Surface of each leather is about 4,0 m<sup>2</sup>, thickness 1,4 - 1,6 mm. Color Folder includes an extraordinary variety of options obtained from a single quality leather. All colors are available with fireproof treatment and UNI9175 certification and BS 5852 Crib 5 with minimum 5,0 sq.m.





**Neve** 117  
Pant. 11-4800



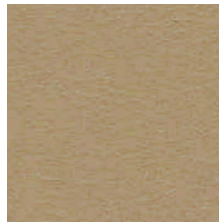
**Latte** 195  
Pant. 11-0701



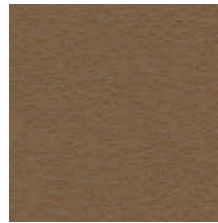
**Avena** 197  
Pant. 14-1113



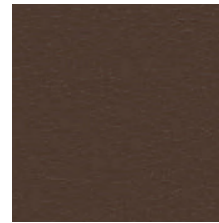
**Lino** 197  
Pant. 15-6307



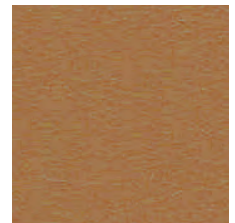
**Segale** 226  
Pant. 16-1212



**Visone** 190  
Pant. 18-1022



**Cioccolato** 140  
Pant. 19-1116



**Siena** 174  
Pant. 17-1045



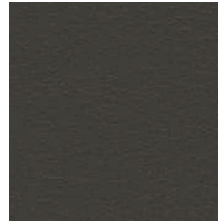
**Cuoio** 131  
Pant. 18-0933



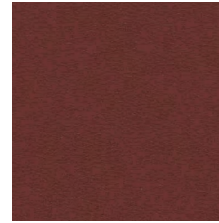
**Caffè** 189  
Pant. 19-1220



**Marmotta** 218  
Pant. 18-0513



**Moretto** 147  
Pant. 19-0812



**Bordeaux** 110  
Pant. 19-1524



**Germanio** 113  
Pant. 18-1658



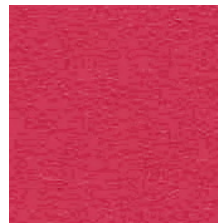
**Ciclamino** 188  
Pant. 19-2315



**Lillà** 102  
Pant. 19-2315



**Viola** 233  
Pant. 19-3540



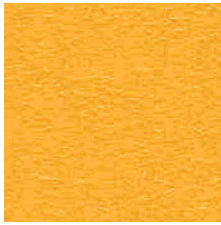
**Bouganville** 220  
Pant. 18-1741



**Arancione** 149  
Pant. 16-1443



**Girasole** 148  
Pant. 14-0760



**Giallo oro** 209  
Pant. 16-0946



**Verde** 212  
Pant. 17-0336



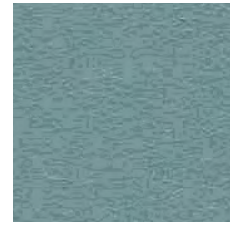
**Azteco** 196  
Pant. 18-4834



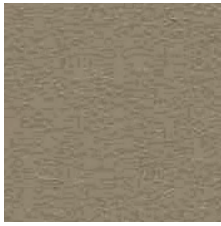
**Provenza** 145  
Pant. 18-4029



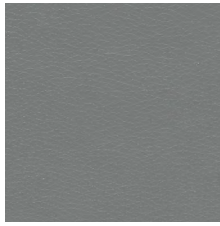
**Bluette** 105  
Pant. 19-4118



**Fiordaliso** 227  
Pant. 17-4021



**Camoscio** 207  
Pant. 17-1310



**Peltro** 202  
Pant. 17-501



**Beola** 112  
Pant. 18-0306



**Nero** 101  
Pant. 19-0303

Tipo di pellame/  
Hyde type

Bovino Europeo/  
European bovine

Concia/  
Tanning

Al cromo/  
Chrome

Tintura /  
Dyeing

Passante/  
Penetrating

Rifinitore/  
Finishing

Poliuretano/  
Polyurethane

Superficie/  
Surface

Fiore liscio/  
Smooth grain

Spessore/  
Thickness

1,0 -1,2 mm

Taglia media/  
Average size

≥5,0 mq

Per quanto riguarda la manutenzione vi informiamo che la nostra pelle è facilmente pulibile con acqua e sapone neutro. Vi rammentiamo che la pelle nei colori chiari è più sensibile allo sporco e richiede una regolare ed attenta pulizia, per evitare che lo sporco venga assorbito e non possa più essere rimosso.

As regards care instructions we inform you our leather is easily washable with water and neutral soap. We remind you leather in clear colors is more sensitive to dirt and demands a regular and attentive cleaning to avoid dirt to be absorbed and no longer removed.

## Caratteristiche tecniche/ Technical datasheet

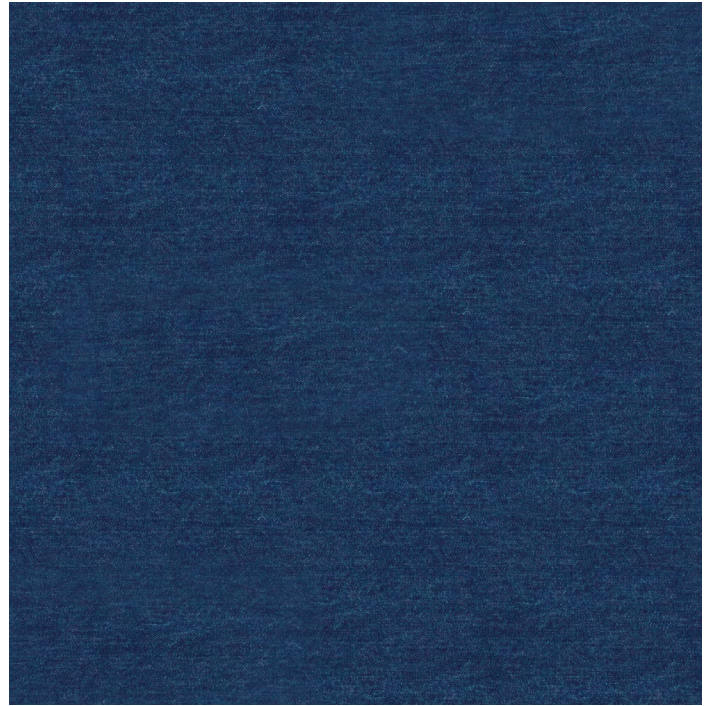
Test	Norma/ Method	Valori/ Result	Scala/ Grade
Sfregamento a secco/ Dry friction	<b>ISO 11640</b>	<b>≥1.000</b>	<b>Cicly/ Cycles</b>
Sfregamento a umido/ Damp friction	<b>ISO 11640</b>	<b>≥250</b>	<b>Cicly/ Cycles</b>
Resistenza al fuoco/ Fire resistance	<b>ISO 1021/1-2</b>	<b>Nessuna combustione/ No ignition</b>	
Ancoraggio rifinitore/ Finish locking	<b>ISO 11644</b>	<b>≥3,0</b>	<b>N/cm2</b>
Fatica a flessione/ Crocking fatigue	<b>ISO 5402</b>	<b>≥50.000</b>	<b>Cicly/ Cycles</b>
Solidità alla luce/ Solidity in light	<b>ISO 105-B02</b>	<b>&gt;4</b>	<b>Blu / Blue</b>
Invecchiamento da calore/ Heat ageing	<b>ISO 17228</b>	<b>≥4</b>	<b>Grigi / Grey</b>

L'ottima qualità della nappa leather deriva da un'accurata selezione di bovini di origine europea. **Nappa leather** è un fiore liscio nappato. Il procedimento di tintura è passante, nella stessa tinta della rifinitore. La superficie di ciascuna pelle è di circa 5,0 m2, lo spessore di 1,0-1,2 mm. La cartella colori comprende un'eccezionale serie di varianti, ottenute su un'unica qualità di pelle. La gamma cromatica, così ampia ed attuale, distingue tale pelle per l'eccellente possibilità di utilizzo, legato alle più esigenti proposte di design. Tutti i colori sono disponibili con trattamento ignifugo e certificazione UNI9175 e BS 5852 Crib 5 con un minimo di 50 mq.

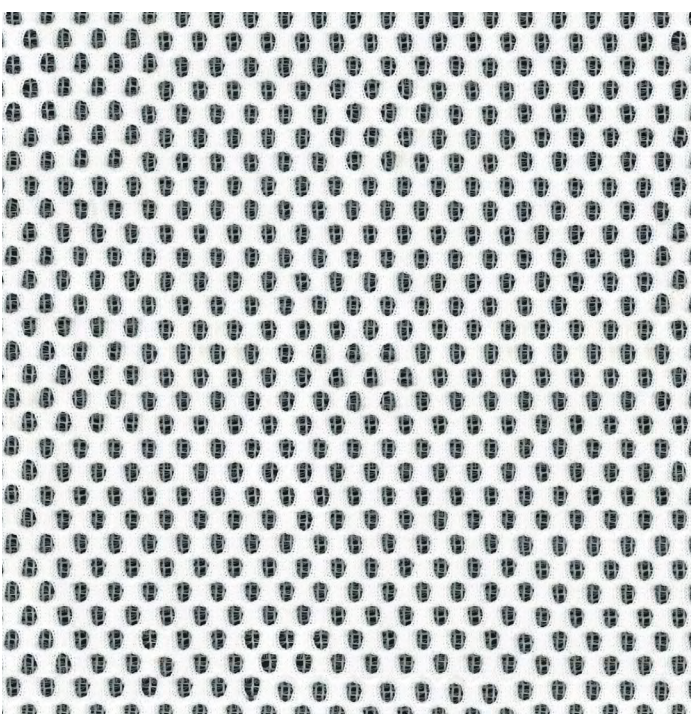
The excellent quality of **Nappa leather** derives from an accurate selection of European bovine. Nappa leather is a smooth grain one. Dyeing procedure is penetrating in the same color of the Finishing. Surface of each leather is about 5,0 m2, thickness 1,0-1,2 mm. Color Folder includes an extraordinary variety of options obtained from a single quality leather. A so extended and actual chromatic gamma distinguishes this Nappa Leather for an excellent possibility of application and solve all design demands. All colors are available with fireproof treatment and UNI9175 certification and BS 5852 Crib 5 with minimum 5,0 sq.m.



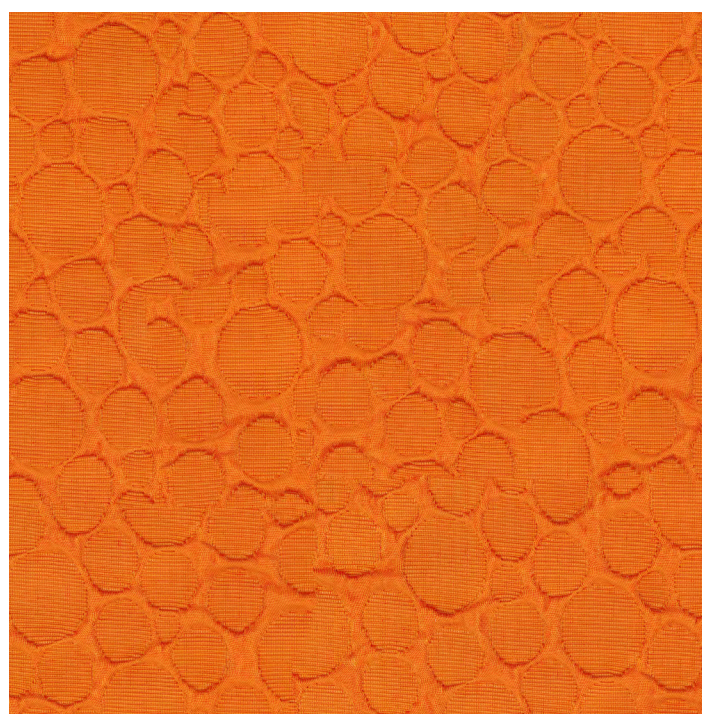
Leonte 1



Leonte 2  
Jeans



Cama 1



Cama 2

# Pop up Inspiration

**Noctis®**

	<b>Cyrus</b>	<b>Canyon</b>	<b>8349</b>	<b>Cannes</b>	<b>Jens</b>
Composizione/ Composition	<b>100% PP</b>	<b>100% PP</b>	<b>100% PL</b>	<b>100% PES</b>	<b>100% CO</b>
Altezza/ Width	<b>140 cm</b>	<b>140 cm</b>	<b>140 cm</b>	<b>140 cm</b>	<b>168 cm</b>
Peso/ Weigt	(± 5%) <b>530 g/ml</b>	(± 5%) <b>630 g/ml</b>	(± 5%) <b>530 g/ml</b>	(± 5%) <b>630 g/ml</b>	- -
Resistenza alla luce/ Colour fastness to light	Scuri/ Dark <b>&gt;7</b>	Scuri/ Dark <b>&gt;7</b>	Scuri/ Dark <b>&gt;5</b>	Scuri/ Dark <b>&gt;5</b>	Scuri/ Dark
Martindale	<b>15.000</b>	<b>15.000</b>	<b>30.000</b>	<b>100.00</b>	
Resistenza del colore al lavaggio/ Colour fastness to washing	<b>5</b>	<b>5</b>	<b>4</b>	<b>4/5</b>	<b>3</b>
Ignifugo/ Fireproof	<b>no</b>	<b>no</b>	<b>no</b>	<b>no</b>	<b>no</b>
Idrorepellente/ Waterproof	<b>no</b>	<b>no</b>	<b>no</b>	<b>no</b>	<b>no</b>
Antimacchia/ Stain resistant	<b>no</b>	<b>no</b>	<b>no</b>	<b>no</b>	<b>no</b>

# N-Zip - Special Fabrics and Materials

Noctis®

Composizione/ Composition

Nastro/ Zipper tape **Poliestrere**

Dente/ Tooth **Resina acetlica pressofusa  
Die-cast acetal resin**

Cursore/ Slider **Lega a base Zinco  
Zinc based alloy**

Quote geometriche/  
Geometric dimensions

Larghezza Catena (A)  
Chain width **7,40 mm**

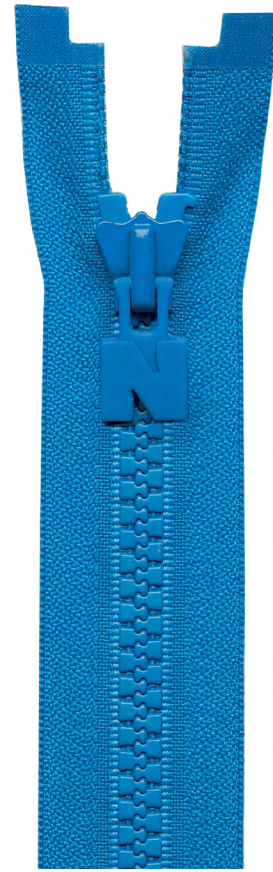
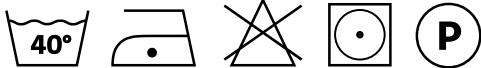
Spessore catena (B)  
Chain thickness **3,00 mm**

Passo (C)  
Step of chain **24,04** (n° denti in 100 mm)  
**24,04** (n° teeth in 100 mm)

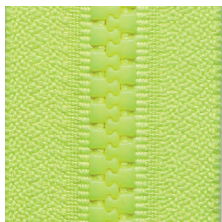
Prove dinamometriche/  
Dynamometric tests

Sforzo Catena Trasversale [N] (D) **400** valore di garanzia  
Transverse chain effort **400** warranty value

Sforzo Cursore Bloccato [N] **50** valore di garanzia  
Blocked slider effort **50** warranty value  
(cursore superiore/ upper slider) (E)



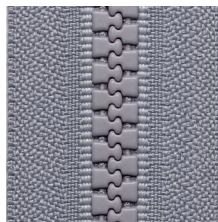
N-Zip 550



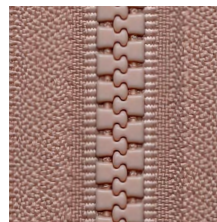
N-Zip Y 287



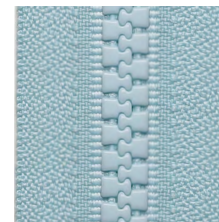
N-Zip 030



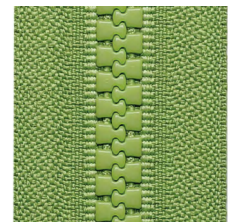
N-Zip 154



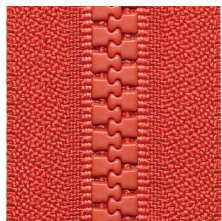
N-Zip 005



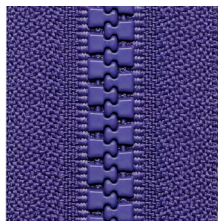
N-Zip Y 204



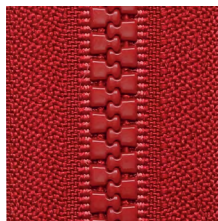
N-Zip 875



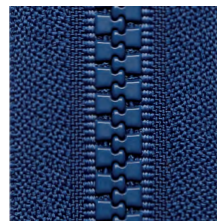
N-Zip 060



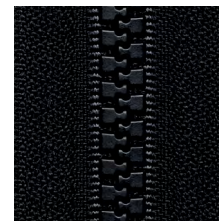
N-Zip 559



N-Zip Y 016



N-Zip 040



N-Zip 580

# Lycra Velluto - Special Fabrics and Materials **Noctis**<sup>®</sup>

Composizione/ Composition	<b>85% PA - 15 % EA</b>
Altezza/ Width	<b>140 cm</b>
Peso/ Weight	(± 5%) <b>220 g/m2</b>
Resistenza alla luce/ Colour fastness to light	Scuri/ Dark - Chiari/ Light <b>&gt;5</b> <b>2-3</b>
Martindale	<b>10.000</b>
Resistenza del colore al lavaggio/ Colour fastness to washing	<b>4/5</b>
Ignifugo Fireproof	<b>no</b>
Idrorepellente Waterproof	<b>no</b>
Antimacchia Stain resistant	<b>no</b>



**Lycra Velluto** 9194  
Pant. 18-0201

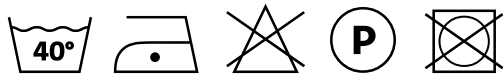


**Lycra Velluto**  
9260  
Pant. 14-4201

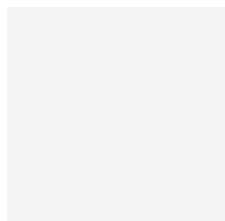
**Lycra Velluto**  
50003  
Pant. 19-2520

**Lycra Velluto**  
60168  
pant. 19-4052

Composizione/ Composition	<b>80% PA - 20%EA</b>
Altezza/ Width	<b>150 cm</b>
Peso/ Weight	(± 5%) <b>190 g/m2</b>
Resistenza alla luce/ Colour fastness to light	Scuri/ Dark <b>6/7</b>
Martindale	<b>25.000</b>
Resistenza del colore al lavaggio/ Colour fastness to washing	<b>4/5</b>
Ignifugo Fireproof	<b>no</b>
Idrorepellente Waterproof	<b>no</b>
Antimacchia Stain resistant	<b>no</b>



**Lycra 701**  
Pant. 19-3938



**Lycra 101**  
Pant. 11-0601



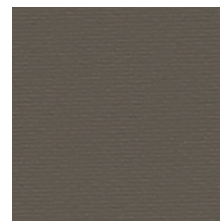
**Lycra 702**  
Pant. 16-4535



**Lycra 305**  
Pant.19-1763



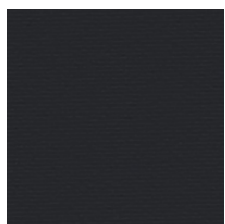
**Lycra 703**  
Pant. 18-4247



**Lycra 406**  
Pant. 18-1016



**Lycra 600**  
Pant. 16-4402



**Lycra 605**  
Pant. 19-3908